



Department of  
**Justice**

[www.dojni.gov.uk](http://www.dojni.gov.uk)

---

**Statistics and Research Branch**

**Perceptions of Crime:  
Findings from the  
2009/10  
Northern Ireland  
Crime Survey**

**Research and Statistical Bulletin 2/2011**

**R Freel, D Quigley and S Toner**

**March 2011**



Produced by Statistics and Research Branch,  
Department of Justice.

For further information write to:

**Statistics and Research Branch,  
Massey House,  
Stormont Estate,  
Belfast BT4 3SX**

**Telephone: 028 9052 7157**

**Fax: 028 9052 7532**

**Email: [statistics.research@dojni.x.gsi.gov.uk](mailto:statistics.research@dojni.x.gsi.gov.uk)**

This bulletin is available on the Internet at:

**[www.dojni.gov.uk](http://www.dojni.gov.uk)**

## SUMMARY OF FINDINGS

- ◆ Drugs (70%), alcohol (67%) and a lack of discipline from parents (62%) were the three factors most commonly identified by NICS 2009/10 respondents as *major* causes of crime in Northern Ireland today. When asked which single factor they considered to be the *main* cause of crime, a quarter of respondents cited 'lack of discipline from parents' (25%) while a further 22% cited 'drugs'.
- ◆ As in all sweeps of the survey to date, NICS 2009/10 respondents were more positive in their perceptions of crime levels in their local areas than at the regional level. The proportion of adults perceiving crime to have increased, both locally (35%) and in Northern Ireland as a whole (64%), are among the lowest levels recorded by the survey.
- ◆ Based on a seven-strand composite measure, findings from NICS 2009/10 show that 13% of respondents perceived the level of anti-social behaviour (ASB) in their local area to be high, a similar proportion to that recorded in England and Wales (14%; BCS 2009/10).
- ◆ When asked to select the type of ASB that caused the single biggest problem in the local area, the most common response, cited by almost a third (32%) of NICS 2009/10 participants, was 'people being drunk or rowdy in public places'. This was followed by 'teenagers hanging around on the streets' (21%).
- ◆ Of the socio-demographic groups examined by NICS 2009/10, the most likely to perceive ASB as a problem in their area included: residents of the 20% most deprived areas of Northern Ireland (31%); people living in social rented accommodation (31%); and single adults with children (30%).
- ◆ Despite a lower prevalence of crime in Northern Ireland, respondents to NICS 2009/10 displayed higher levels of worry about crime than their counterparts in England and Wales (BCS 2009/10): violent crime (20% v 13%); burglary (16% v 10%) and car crime (13% v 10%).
- ◆ While NICS 2009/10 respondents displayed higher levels of worry about crime than their counterparts in England and Wales, they were, with the exception of burglary (both 15%), less likely to perceive themselves to be at risk of victimisation: violent crime (10% v 15%) and car crime (18% v 21%).
- ◆ Findings from NICS 2009/10 reveal a disparity between people's perceived likelihood of being a victim of crime and their actual risk. For instance, 15% of people thought they were likely to be a victim of burglary, compared with an actual risk of two per cent. A similar pattern emerged in terms of car crime (18% v 3%) and violent crime (10% v 2%).
- ◆ Two-thirds (66%) of NICS 2009/10 respondents felt that 'fear of crime' has a minimal impact on their quality of life, with a further 29% claiming it has a moderate effect. The remaining five per cent believed that their quality of life is greatly affected by their 'fear of crime'.
- ◆ Among those NICS 2009/10 respondents most likely to state that their lives are greatly affected by a 'fear of crime' were: adults living in social rented accommodation (11%); recent victims of crimes reported to the police (10%); residents in areas of self-perceived high ASB (10%); single adults with children (10%); and divorced people (10%).

<b>CONTENTS</b>	<b>Page</b>
<b>Summary of findings</b>	<b>i</b>
<b>1. Introduction</b>	<b>1</b>
1.1 The focus of this publication	1
1.2 About the Northern Ireland Crime Survey	2
<b>2. Perceptions of causes of crime, crime levels and anti-social behaviour</b>	<b>3</b>
2.1 Causes of crime	3
2.2 Perceptions of changes in crime levels	3
2.3 Perceptions of anti-social behaviour in Northern Ireland and England and Wales	5
2.4 Perceptions of anti-social behaviour by personal, household and area characteristics	6
<b>3. Worry about crime and personal safety</b>	<b>8</b>
3.1 Worry about crime and personal safety in Northern Ireland and England and Wales	8
3.2 Worry about crime and personal safety by personal, household and area characteristics	10
<b>4. Perceptions of the likelihood of victimisation</b>	<b>13</b>
4.1 Perceptions of the likelihood of victimisation in Northern Ireland and England and Wales	13
4.2 Perceptions of the likelihood of victimisation by personal, household and area characteristics	15
4.3 Perceptions of the likelihood of victimisation, and actual risk, in Northern Ireland	16
<b>5. Perceptions of the effect of ‘fear of crime’ on quality of life</b>	<b>17</b>
5.1 Perceptions of the effect of ‘fear of crime’ on quality of life in Northern Ireland and England and Wales	17
5.2 Perceptions of the effect of ‘fear of crime’ on quality of life by personal, household and area characteristics	18
<b>References</b>	<b>20</b>
<b>Tabular Annex</b>	<b>21</b>
<b>Technical Annex</b>	<b>34</b>

<b>CONTENTS OF TABULAR ANNEX</b>		<b>Page</b>
<b>A1</b>	Perceptions of the causes of crime in Northern Ireland	21
<b>A2</b>	Perceptions of changes in overall crime levels in Northern Ireland and England and Wales	21
<b>A3</b>	Perceptions of changes in local crime levels in Northern Ireland and England and Wales	21
<b>A4</b>	Perceptions of different types of anti-social behaviour as very / fairly big problems in Northern Ireland and England and Wales	22
<b>A5</b>	Perceptions of anti-social behaviour, by personal characteristics in Northern Ireland	23
<b>A6</b>	Perceptions of anti-social behaviour, by household and area characteristics in Northern Ireland	24
<b>A7</b>	Worry about crime and personal safety in Northern Ireland and England and Wales	25
<b>A8</b>	Worry about crime and personal safety, by personal characteristics (%) in Northern Ireland	26
<b>A9</b>	Worry about crime and personal safety, by household and area characteristics in Northern Ireland	27
<b>A10</b>	Perceptions of the risk of victimisation in Northern Ireland and England and Wales	28
<b>A11</b>	Perceptions of the risk of victimisation, by personal characteristics in Northern Ireland	29
<b>A12</b>	Perceptions of the risk of victimisation, by household and area characteristics in Northern Ireland	30
<b>A13</b>	Perceptions of the effect of 'fear of crime' on quality of life in Northern Ireland and England and Wales	31
<b>A14</b>	Perceptions of the effect of 'fear of crime' on quality of life, by personal characteristics in Northern Ireland	32
<b>A15</b>	Perceptions of the effect of 'fear of crime' on quality of life, by household and area characteristics in Northern Ireland	33

## 1. INTRODUCTION

### 1.1 The focus of this publication

This bulletin draws on findings from the 2009/10 Northern Ireland Crime Survey (NICS), a representative, continuous, personal interview survey of the experiences and perceptions of crime of 4,102 adults living in private households throughout Northern Ireland. Previously conducted on an ad hoc basis in 1994/95, 1998, 2001 and 2003/04, the NICS began operating on a continuous basis in January 2005.

In addition to describing respondents' perceptions of causes of crime, recent changes in crime levels and the extent of anti-social behaviour in the local area, the bulletin illustrates three commonly used measures of concern about crime:

1. worry about crime and personal safety;
2. perceptions of the risk of victimisation; and
3. perceptions of the effect of 'fear of crime' on quality of life.

Comparisons are made, where appropriate, between the results of the 2009/10 NICS and those of the 2009/10 British Crime Survey (BCS; Flatley *et al.*, 2010), the equivalent survey for England and Wales, as well as with earlier sweeps of the NICS. In addition, findings from NICS 2009/10 are examined across the following socio-demographic (personal, household and area) groups, the first six of which (listed below) relate to equality categories specified in Section 75 of the Northern Ireland Act 1998:

1. religious belief;
2. age;
3. living arrangements (marital status);
4. sex (gender);
5. disability (or illness);
6. household type (child dependants);
7. self-perceived nationality;
8. household income;
9. housing tenure;
10. type of area (urban / rural);
11. policing district (see Technical Annex for details);
12. multiple deprivation measure rank (MDM 2010);
13. perceived level of anti-social behaviour in area;
14. experience of crime reported to the police; and
15. daily newspaper readership.

Throughout this report key findings are commented on in the text, with full numerical details on each section available in the relevant tables comprising the Tabular Annex.

Separate NICS 2009/10 bulletins, presenting findings on perceptions of policing, justice and organised crime (Freel and Toner, 2010) and experience of crime (Toner and Freel, 2010) have already been published. Additional reports on the night-time economy and domestic violence will publish separately.

## 1.2 About the Northern Ireland Crime Survey

Closely mirroring the format and core questions of the BCS, the NICS is an important source of information about levels of crime and public attitudes to crime. Its results play an important role in informing and monitoring government policies and targets, such as, strategies relating to public confidence, crime reduction, community safety, victims and witnesses, sexual violence and abuse, drugs and domestic violence.

An alternative, but complementary, measure of crime to offences recorded by the police, the main aims of the NICS are to:

- ◆ measure crime victimisation rates experienced by people living in private households, whether or not these crimes were reported to or recorded by the police;
- ◆ monitor trends in the level of crime, independent of changes in reporting levels or police recording practices;
- ◆ measure people's perceptions about and reactions to crime (for example, the level and causes of crime, the extent to which they are concerned about crime and the effect of crime on their quality of life);
- ◆ identify the characteristics and circumstances of people most at risk from and affected by different types of crime;
- ◆ measure public confidence in policing and the wider criminal justice system; and
- ◆ collect sensitive information, using self-completion modules, on people's experiences regarding crime-related issues, such as sexual violence and abuse, illicit drugs and domestic violence.

Recorded crime figures cannot, by their nature, provide an impression of the extent of concern about crime (often described as 'fear of crime') among different sections of the community. Hence, it is necessary to complement the police figures with information drawn from the NICS, which, for the crime types it covers, provides a more complete measure of the extent and impact of crime against private households and their adult occupants.

For the most part, the interviewer-administered modules for NICS 2009/10 were based on BCS 2009/10. However, some modification has been necessary to reflect local issues and the fact that the smaller NICS sample size would not have generated robust results for follow-up questions asked of small sub-sections of the sample.

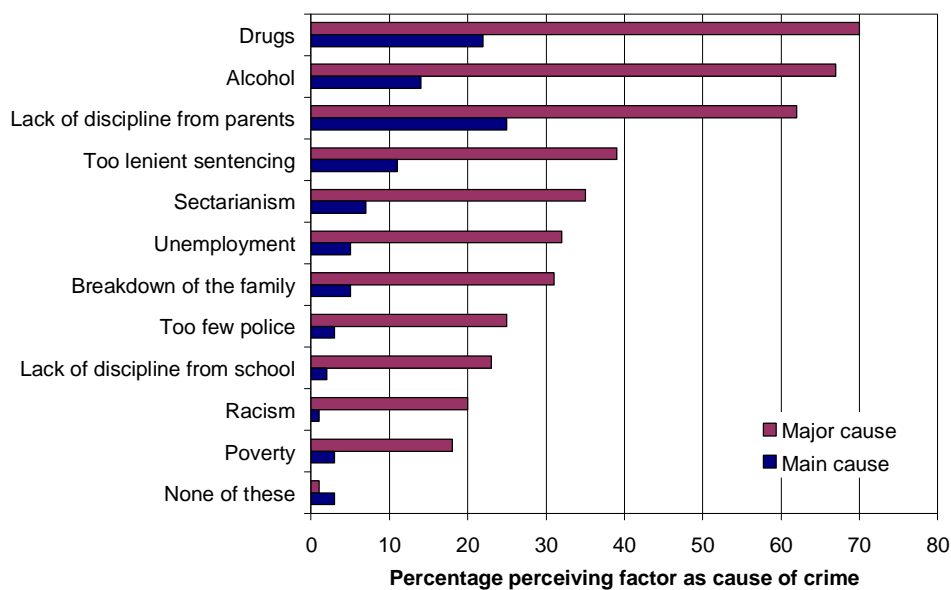
## 2. PERCEPTIONS OF CAUSES OF CRIME, CRIME LEVELS AND ANTI-SOCIAL BEHAVIOUR

### 2.1 Causes of crime

Northern Ireland Crime Survey (NICS) respondents are asked to select from a list the factors they consider to be major causes of crime in Northern Ireland today. If a respondent selects more than one factor, they are then asked which of the factors they believe to be the main cause of crime.

- ◆ Findings from NICS 2009/10 show that drugs, alcohol and lack of discipline from parents (70%, 67% and 62% respectively) remain the three factors most commonly identified as major causes of crime in Northern Ireland today. When asked which single factor they considered to be the main cause of crime, a quarter of respondents cited 'lack of discipline from parents' (25%) while a further 22% cited 'drugs'. Alcohol (14%) and 'too lenient sentencing' (11%) were identified as the next most common causes of crime (Table A1; Figure 2.1).

Figure 2.1: Perceptions of causes of crime (%) in Northern Ireland



### 2.2 Perceptions of changes in crime levels

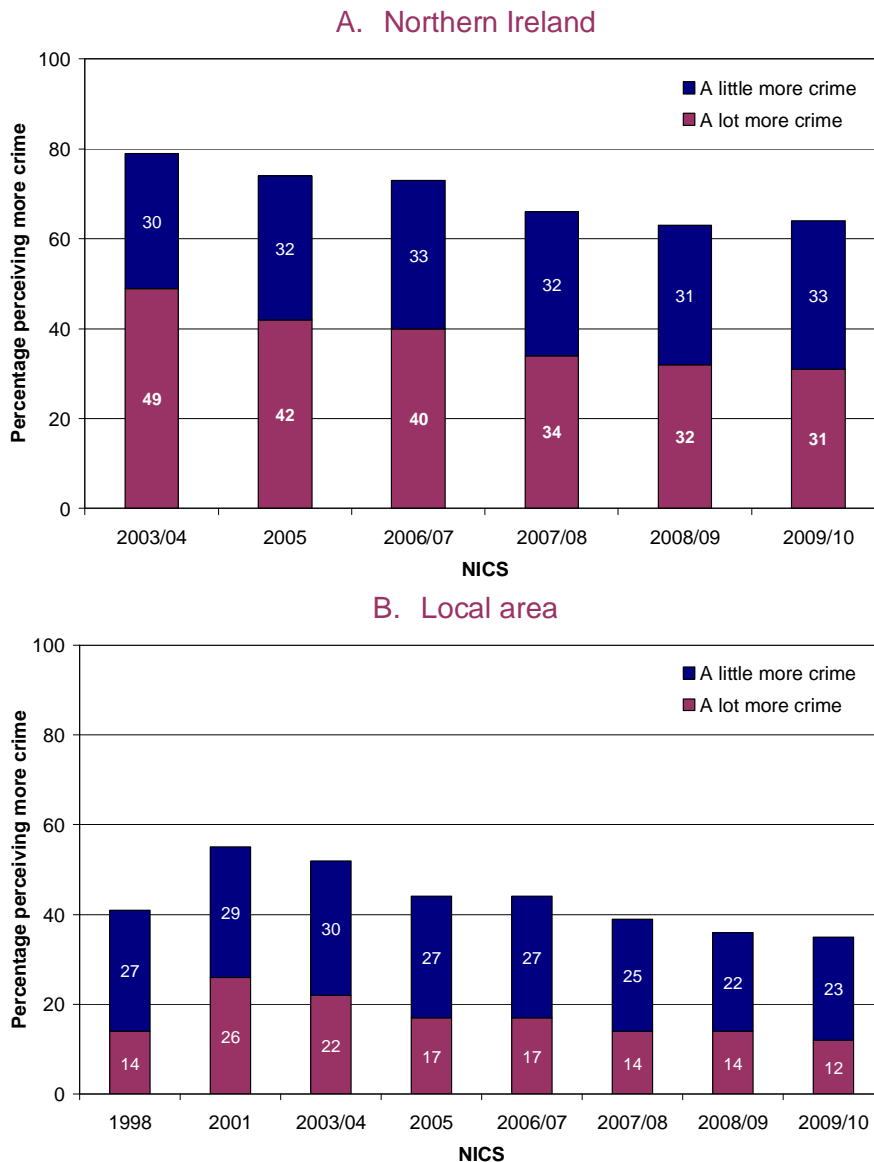
NICS participants are also asked how they perceive the level of crime to have changed, if at all, in both Northern Ireland and their local area during the two years prior to interview, based on a five-point scale ranging from 'a lot more crime' to 'a lot less crime'. Typically, people are inclined to believe crime is on the increase, even when it is not, and that the situation is worse at the regional level than in their own area. Thus, it is the trend in this proportion, rather than the actual value, that is of primary interest.

- ◆ Tables A2, A3 and Figure 2.2 illustrate that the proportions of NICS 2009/10 respondents believing that crime is on the increase, either locally (35%) or in Northern Ireland as a whole (64%), are among the lowest levels ever recorded by the survey, remaining unchanged ( $p < 0.05$ ) since the previous year.

## NICS 2009/10: Perceptions of Crime

- ◆ Almost two-thirds (64%) of NICS 2009/10 respondents believed that crime levels across Northern Ireland had increased either 'a little' or 'a lot' in the preceding two years. While this is similar to that observed in 2007/08 (65%) and 2008/09 (64%), it is lower than the equivalent proportions recorded in 2006/07 (73%), 2005 (74%) and 2003/04 (79%) (Table A2 and Figure 2.2A).
- ◆ As in all sweeps of the survey to date, NICS 2009/10 respondents were more positive in their perceptions of crime levels within their local areas than at the regional level. Just over one-third (35%) of NICS 2009/10 respondents felt that crime had increased in their local area, with just over a tenth (12%) of all respondents believing there was 'a lot more crime' (Table A3 and Figure 2.2B).
- ◆ When NICS 2009/10 and BCS 2009/10 (Flatley *et al.*, 2010) findings are compared it appears that while adults in Northern Ireland are more likely than their counterparts in England and Wales to have perceived an increase in crime levels within the local area (35% v 31% respectively), views concerning the regional crime level are more closely aligned (64% v 66%) (Tables A2 and A3).

Figure 2.2: Perceptions of changing crime levels (%) in Northern Ireland and the local area



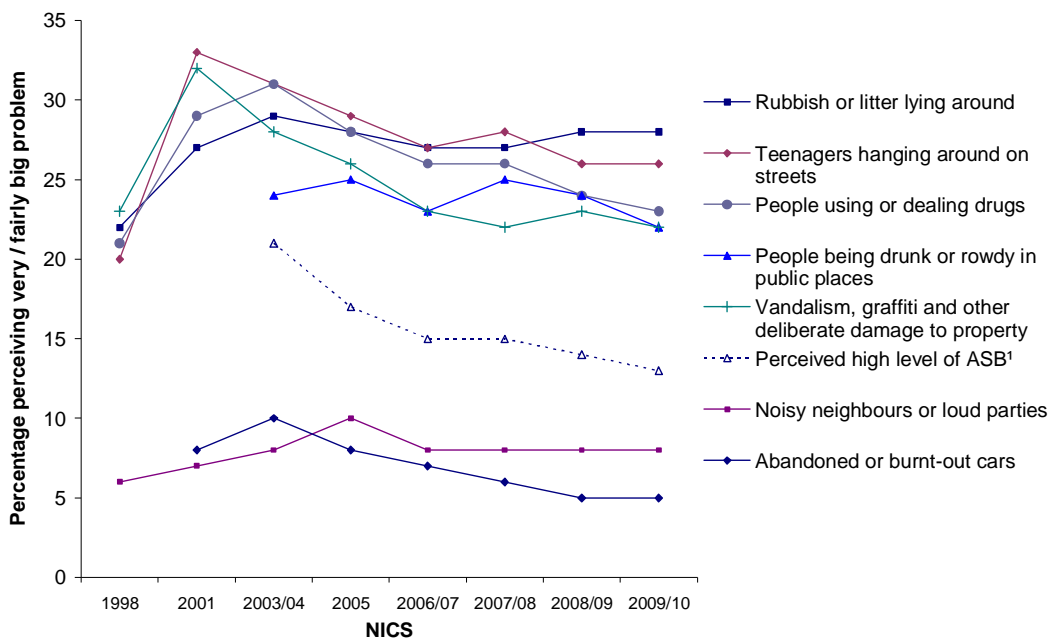
### 2.3 Perceptions of anti-social behaviour in Northern Ireland and England and Wales

Respondents to the NICS and BCS are asked to rate how much of a problem different types of anti-social behaviour (ASB) are in their area. Since 2003/04, responses to the following seven strands have been used to form a composite measure to gauge the overall perceived level of ASB in the local area:

1. abandoned or burnt-out cars;
2. noisy neighbours or loud parties;
3. people being drunk or rowdy in public places;
4. people using or dealing drugs;
5. teenagers hanging around on the streets;
6. rubbish or litter lying around; and
7. vandalism, graffiti and other deliberate damage to property.

- ◆ Based on this composite measure, findings from NICS 2009/10 show that 13% of people in Northern Ireland perceived the level of ASB in their local area to be high, similar to that recorded in 2008/09 (14%). The equivalent figure for England and Wales (BCS 2009/10) was 14% (Table A4).
- ◆ The ASB types most likely to be perceived by NICS 2009/10 respondents as problems in the local area were ‘rubbish or litter lying around’ (28%) and ‘teenagers hanging around on streets’ (26%) whereas ‘abandoned or burnt-out cars’ (5%) and ‘noisy neighbours or loud parties’ (8%) were considered the least problematic forms of ASB. These results reflect the pattern in England and Wales, where the respective BCS 2009/10 rates were measured at 28%, 27%, 5% and 11% respectively (Table A4 and Figure 2.3).
- ◆ Across the seven strands that make up the overall ASB measure there were no statistically significant changes ( $p < 0.05$ ) between the results of NICS 2008/09 and 2009/10 (Table A4).

Figure 2.3: Perceptions of ASB in the local area (%)



1. Derived from responses to the seven individual ASB strands.

- ◆ When asked to select the type of ASB that caused the single biggest problem in the local area, the most common response, cited by almost a third (32%) of NICS 2009/10 participants, was 'people being drunk or rowdy in public places'. This was followed by 'teenagers hanging around on the streets' (21%) and 'rubbish or litter lying around' (16%). At 1%, drug use or dealing was least likely to be considered the single biggest local problem.

## 2.4 Perceptions of anti-social behaviour by personal, household and area characteristics

Tables A5 and A6, containing results from NICS 2009/10, indicate that there were marked differences across demographic and socio-economic groups in perceptions of ASB in Northern Ireland.

- ◆ The proportion of people perceiving a high level of ASB in the local area tends to decrease with age, with around a fifth (21%) of 16-24 year-olds citing a high level of ASB in their area, compared with 4% of those aged 75+ (Table A5).
- ◆ Catholic respondents (18%) were twice as likely as Protestants (9%) to perceive ASB to be at a high level in their area. When consideration is given to the seven individual strands of ASB examined, this difference is greatest, in percentage point terms, with regard to people using or dealing drugs (30% v 18% respectively) (Table A5).

A similar trend to that observed within religion is apparent in terms of perceptions of ASB by perceived nationality and newspaper readership.

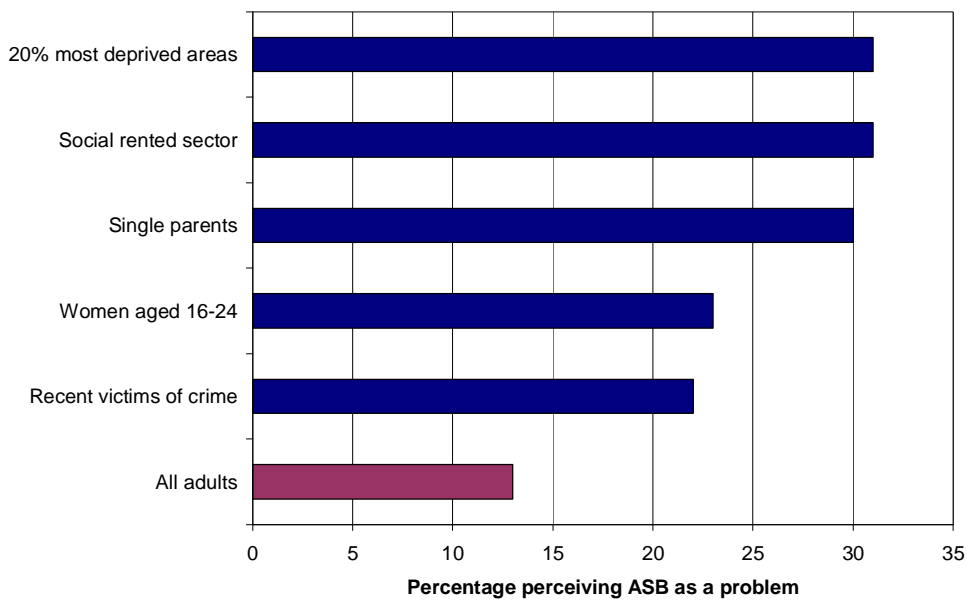
- ◆ NICS 2009/10 respondents who consider their nationality to be Irish (19%) were much more likely than British (9%) or Northern Irish (11%) participants to consider their local area to display a high level of ASB.
- ◆ Likewise, readers of the Irish News (18%) were more likely than the Newsletter (6%) or Belfast Telegraph (11%) readership to view ASB as a problem in their area (Table A5).

Perhaps unsurprisingly, the greatest variation of perceived ASB within a single group was observed in terms of deprivation in an area.

- ◆ Findings from NICS 2009/10 show that people living in the 20% most deprived areas of Northern Ireland were most likely to view ASB as a problem in their area (31%), contrasting with 6% of those in the least deprived areas, as measured by the Northern Ireland Multiple Deprivation Measure (MDM) rank (Table A6).
- ◆ In addition, people living in social rented accommodation (31%) were twice as likely as those in private rented accommodation (15%) and over three times as likely as owner-occupiers (9%) to consider their local area to have a high level of ASB (Table A6).
- ◆ A similar pattern was apparent in terms of household type where single parent families (30%) were twice as likely as households with two adults and children (15%), or no children at all (14%) to perceive a ASB to be at a high level in their area (Table A6).
- ◆ On the whole, household income tends to be negatively correlated with the perceived level of ASB in the local area. While a fifth (19%) of households with an annual income of less than £10,000 considered ASB to be problematic, this proportion drops to 8% of households earning £50,000 or more (Table A6).

- ◆ Urban dwellers (17%) were over twice as likely as their rural counterparts (8%) to perceive a high level of ASB in their area, a trend that is exemplified when consideration is given to respondents from Belfast alone (20%) (Table A6).
- ◆ In summary, Tables A5, A6 and Figure 2.4 suggest that among those respondents most likely to perceive ASB as a problem in their area were:
  - people living in the 20% most deprived areas (31%);
  - adults living in social rented accommodation (31%);
  - single adults with children (30%);
  - women aged 16-24 (23%); and
  - recent victims of crimes that were reported to the police (22%).

Figure 2.4: Those most likely to perceive ASB as a problem (%) in the local area



Source: NICS 2009/10

### 3. WORRY ABOUT CRIME AND PERSONAL SAFETY

#### 3.1 Worry about crime and personal safety in Northern Ireland and England and Wales

Worry about becoming a victim of crime is measured by both the NICS and BCS in two ways: firstly, about specific crimes; and secondly, with regard to personal safety when alone after dark, either at home or walking in the local area (Tables A7 – A9).

Respondents to NICS 2009/10 and BCS 2009/10 were asked how worried they are about becoming victims of the following crimes using a four-point scale, ranging from 'very worried' to 'not at all worried':

1. home being burgled;
2. being mugged and robbed;
3. physical attack by a stranger;
4. race or sectarian attack;
5. rape;
6. theft of a car; and
7. theft from a car.

Two composite indicators for worry about car crime and violent crime are constructed from the responses to the individual car crime and violent crime questions. These additional indicators, together with the proportion of respondents who claimed to be 'very worried' about becoming a victim of burglary, are comparable with Statutory Performance Indicators within the former Police Performance Assessment Framework in England and Wales (Tables A7–A9).

For the worry about car crime indicator, responses to each car crime question of 'very worried' are awarded 2 points and 'fairly worried' 1 point. Those respondents scoring a combined 3 or 4 points are considered to have a high level of worry about car crime. This measure refers only to respondents residing in households owning, or with regular use of, a vehicle.

A similar approach is used to determine the worry about violent crime indicator, with responses to each violent crime question of 'very worried' being awarded 2 points and 'fairly worried' 1 point. In this instance, the scale ranges from 0 to 8 points and those scoring 4 or more points are deemed to have a high level of worry about violent crime.

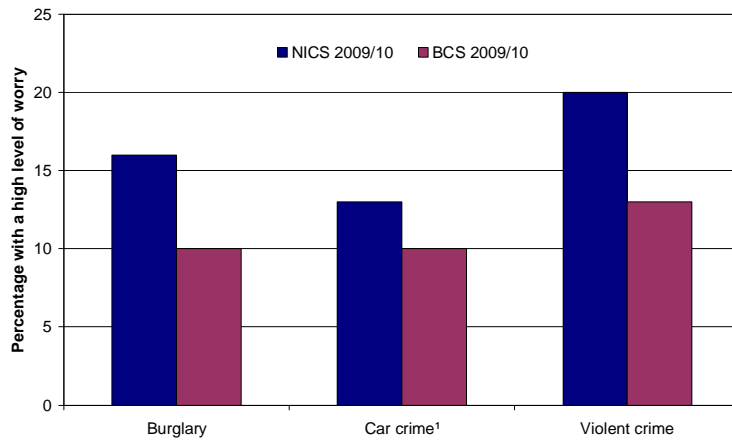
Since 2007/08, NICS respondents have also been asked how worried they are overall about becoming victims of all types of crime in general, using the same four-point scale ('very worried' to 'not at all worried'). Responses to this question are included within Table A7.

Table A7 shows the proportions of respondents in Northern Ireland and England and Wales who expressed high levels of worry about burglary, car crime and violent crime. Results show that people in Northern Ireland tend to have higher levels of worry about crime than those in England and Wales.

- ◆ Despite both surveys confirming that the risk of becoming a victim of crime remains lower in Northern Ireland than in England and Wales, NICS 2009/10 respondents were more likely than their BCS 2009/10 counterparts to express high levels of worry across each of the crime types examined: violent crime (20% v 13%); burglary (16% v 10%) and car crime (13% v 10%) (Table A7; Figure 3.1).

- ◆ In both jurisdictions, respondents were more likely to be worried about being a victim of violent crime than burglary or vehicle-related theft (Table A7; Figure 3.1).

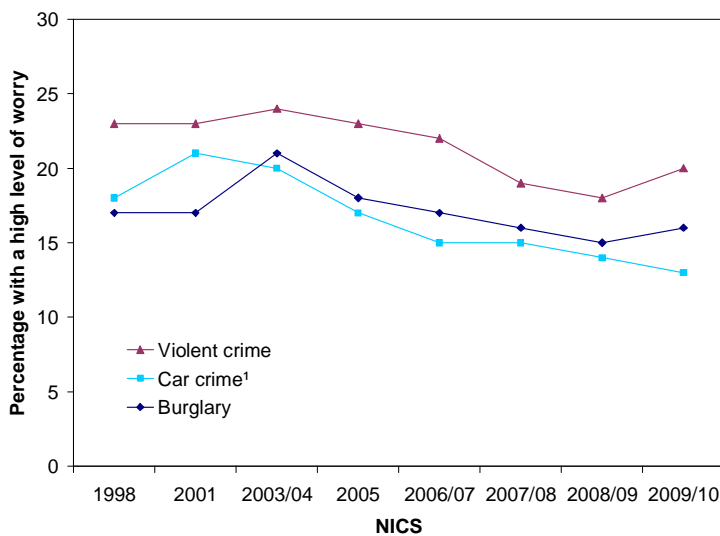
Figure 3.1: Worry about crime (%) in Northern Ireland and England and Wales



1. Based on respondents residing in households owning, or with regular use of, a vehicle.

- ◆ The proportion of NICS 2009/10 respondents who claimed to be ‘very worried’ about crime overall was unchanged since 2008/09 (both 8%) and similar to that recorded in England and Wales (7%; BCS 2009/10) (Table A7).
- ◆ The proportion of NICS respondents reporting high levels of worry about burglary and violent crime have generally been decreasing since highs of 21% and 24% (respectively) were reported in 2003/04. The apparent increases since 2008/09 (from 15% to 16% and 18% to 20% respectively) are not statistically significant at the 5% level ( $p < 0.05$ ) (Table A7; Figure 3.2).
- ◆ Similarly, levels of worry about car crime have been decreasing since 2001 (21%). While there was no statistically significant change ( $p < 0.05$ ) in levels of worry since 2008/09, at 13%, the rate recorded by NICS 2009/10 participants represents the lowest figure to date (Table A7; Figure 3.2).

Figure 3.2: Worry about crime (%) in Northern Ireland, 1998 to 2009/10



1. Based on respondents residing in households owning, or with regular use of, a vehicle.

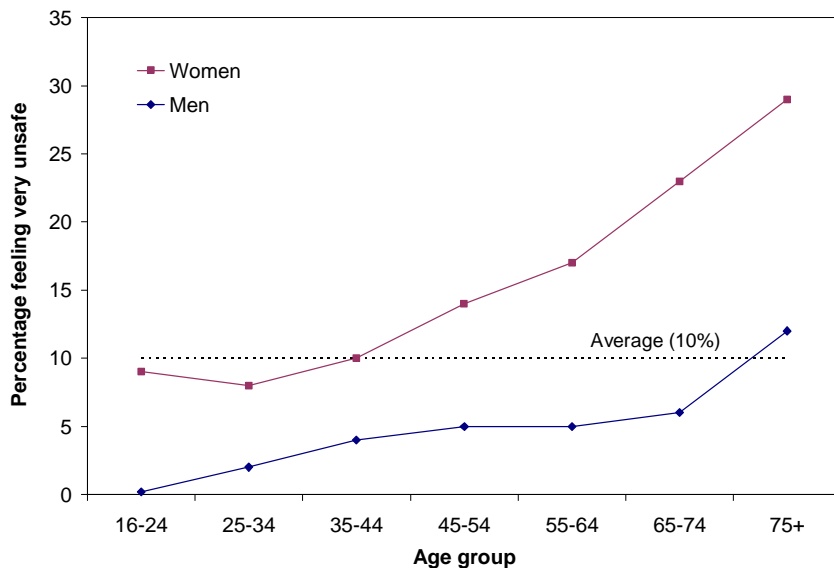
- ◆ As in previous sweeps, respondents in both Northern Ireland and England and Wales were much more likely to feel very unsafe about walking alone in their area after dark (10% v 8% respectively) than being alone in their home at night (2% v 1%) (Table A7).
- ◆ Consistent with levels of worry about crime, NICS 2009/10 findings show no statistically significant change ( $p < 0.05$ ) since 2008/09 in the proportions of adults feeling 'very unsafe' when walking alone in their local area at night (both 10%) or when home alone at night (both 2%) (Table A7).

### 3.2 Worry about crime and personal safety by personal, household and area characteristics

Tables A8 and A9 present a socio-demographic breakdown of NICS 2009/10 respondents according to their levels of worry about crime and personal safety in Northern Ireland.

- ◆ The relationship between a person's age and their level of worry about crime varies according to the crime type. For instance, younger respondents aged 16-24 years displayed the highest levels of worry about violent crime (29%) and car crime (23%) but were equally the group with the lowest level of worry about burglary (14%). These rates compare with NICS 2009/10 averages of 20%, 13% and 16% respectively. There was less variation between age groups in worry about crime overall with proportions of respondents 'very worried' ranging between 7% and 10% (Table A8).
- ◆ In terms of personal safety, older respondents were much more likely to feel very unsafe walking alone in the area after dark, with those aged 75+ (21%) over four times as likely to feel very unsafe as people aged under 35 (5%) (Table A8 and Figure 3.3).
- ◆ Findings from NICS 2009/10 also show that women were much more likely than men to worry about crime and personal safety, with the greatest disparities observed in reported levels of worry about violent crime (27% v 10% respectively) and feeling very unsafe when walking alone in their area at night (14% v 4%) (Table A8; Figure 3.3).

Figure 3.3: Worry about personal safety while walking alone in the local area after dark (%) by gender and age

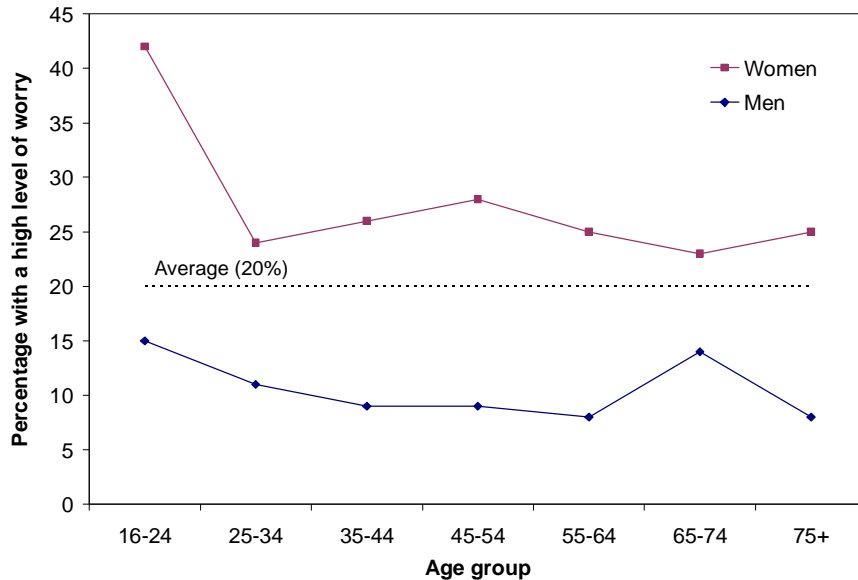


Source: NICS 2009/10

## NICS 2009/10: Perceptions of Crime

- ◆ When age and gender are combined, it is apparent that young women aged 16-24 displayed the highest worry rating for violent crime (42%) of all the demographic groups examined, at more than double the NICS 2009/10 average (20%). With the exception of the age group 65-74 years, levels of worry about violent crime expressed by women were more than double that of their male counterparts (Table A8; Figure 3.4).

Figure 3.4: Worry about violent crime (%) by gender and age



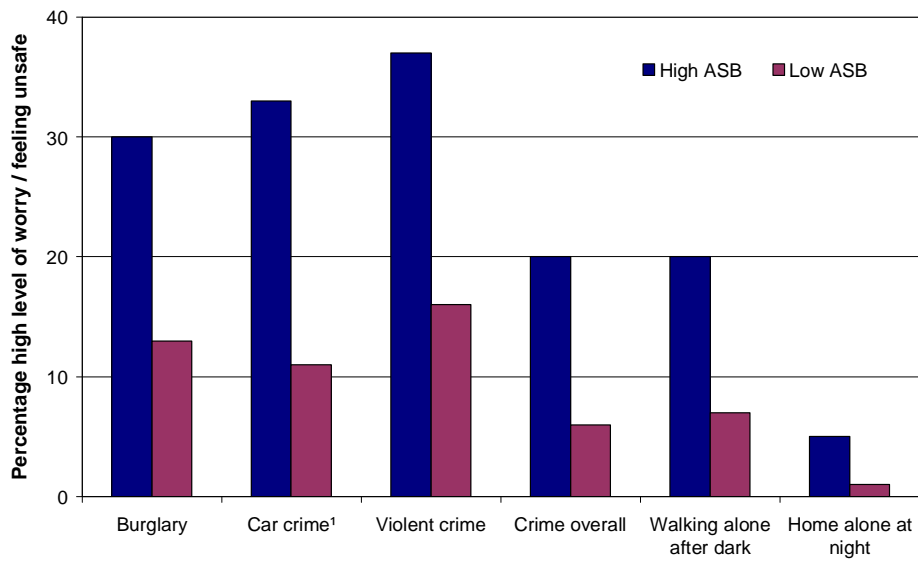
Source: NICS 2009/10

- ◆ Single parents displayed particularly high levels of worry about violent crime (33%), burglary (27%), and crime overall (17%). These rates compare with NICS 2009/10 averages of 20%, 16% and 8% respectively (Table A9).
- ◆ On the whole, there appears to be a negative correlation between household income and worry about crime and personal safety, whereby levels of worry decrease as income increases. For example, 29% of respondents from households with a total income of under £10,000 expressed a high level of worry about violent crime, compared with 8% of those earning £50,000 or more. In terms of worry about crime overall, the disparity increases to equivalent rates of 14% and 3% respectively (Table A9).
- ◆ People living in social-rented accommodation were much more likely than other tenure groups to reveal high levels of worry about crime and personal safety, displaying above average rates across the board. The greatest contrast was between those respondents in socially-rented and owner-occupied accommodation, including: car crime (27% v 11%); burglary (26% v 14%); violent crime (29% v 17%); and crime overall (17% v 7%) (Table A9).
- ◆ Respondents from Northern Ireland's 20% most deprived areas tended to display higher levels of worry about all types of crime and personal safety examined, with the greatest contrast always with those living in the least deprived areas: burglary (23% v 11%); car crime (26% v 11%); violent crime (27% v 14%); crime overall (14% v 5%); walking alone after dark (15% v 6%); and home alone at night (3% v 1%) (Table A9).

A perceived high level of ASB in the local area has a strong positive correlation with a high level of worry about crime and personal safety. This is particularly apparent with regard to household crime (and crime overall) where respondents from high ASB areas displayed the highest levels of worry of all demographic and socio-economic groups examined, and were second only to young women when it came to worry about violent crime.

- ◆ Respondents living in areas where they perceive ASB to be high were much more likely to worry about all types of crime and personal safety than those from low ASB areas: car crime (33% v 11%); violent crime (37% v 16%); burglary (30% v 13%); crime overall (20% v 6%); walking alone after dark (20% v 7%); and home alone at night (5% v 1%) (Table A9 and Figure 3.5).

Figure 3.5: Worry about crime and personal safety (%) by perceived level of ASB



Source: NICS 2009/10

1. Based on respondents residing in households owning, or with regular use of, a vehicle.

## 4. PERCEPTIONS OF THE LIKELIHOOD OF VICTIMISATION

### 4.1 Perceptions of the likelihood of victimisation in Northern Ireland and England and Wales

A person's perception of the likelihood that they will be a victim of crime may be influenced by their level of worry about crime. In addition to questions on worry about crime (Section 3), the NICS and BCS ask respondents how likely they think it is that they will be a victim of the following offences in the next 12 months, using a four-point scale ranging from 'very likely' to 'very unlikely':

1. home being burgled;
2. theft of a car;
3. theft from a car;
4. being mugged and robbed; and
5. physical attack by a stranger.

Two composite indicators to measure the perceived likelihood of being a victim of car crime and violent crime are constructed from the responses to the individual car crime and violent crime questions. These additional indicators, together with the proportion of respondents who say they are very or fairly likely to have their home burgled in the next year, comprise the three crime groups presented in this section, which are comparable with BCS analyses (Tables A10–A12).

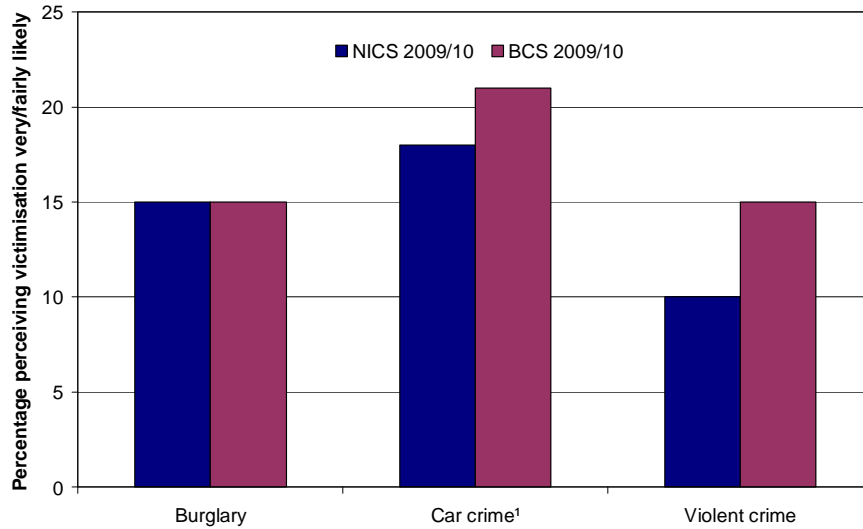
The perceived likelihood of being a victim of car crime is a composite measure of respondents who think they are very or fairly likely to either have a car/van stolen or have something stolen from a car/van in the next year, or both. This measure refers only to respondents residing in households owning, or with regular use of, a vehicle.

Similarly, the perceived likelihood of being a victim of violent crime is a composite measure of anyone who thinks they are very or fairly likely to be either mugged/robbed or physically attacked by a stranger in the next year, or both.

- ◆ In line with results from previous sweeps, the vast majority of NICS 2009/10 respondents believed it unlikely that they would fall victim to any of these crimes during the coming year. For example, it is apparent from Table A10 that nine in ten people surveyed (90%) did not think they would experience violent crime.
- ◆ Overall, respondents to NICS 2009/10 continued to believe they were most likely to become a victim of car crime. Almost a fifth (18%) thought it at least fairly likely that they would experience some form of vehicle-related theft, compared with burglary (15%) and violent crime (10%) (Table A10; Figure 4.1 and 4.2).
- ◆ With the exception of burglary (both 15%), NICS 2009/10 respondents were less likely than their counterparts in England and Wales (BCS 2009/10) to perceive themselves to be at risk of victimisation: violent crime (10% v 15%); and car crime (18% v 21%) (Table A10; Figure 4.1). These findings are generally consistent with recorded crime statistics and NICS data, both of which indicate a lower prevalence of crime in Northern Ireland than in England and Wales.

## NICS 2009/10: Perceptions of Crime

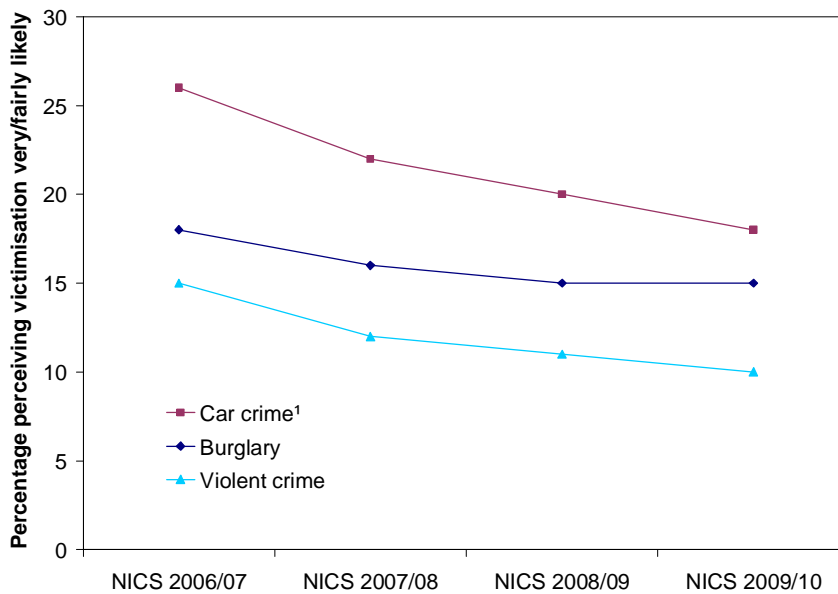
Figure 4.1: Perceptions of the risk of victimisation (%) in Northern Ireland and England and Wales



1. Based on respondents residing in households owning, or with regular use of, a vehicle.

- ◆ There were no statistically significant changes ( $p < 0.05$ ) observed between NICS 2008/09 and NICS 2009/10 in the perceived level of risk associated with each of the crime types examined. However, when compared with NICS 2006/07, statistically significant decreases were apparent in the proportions of respondents believing it likely that they would fall victim to: car crime (26% in 2006/07 to 18% in 2009/10); violent crime (15% to 10%); and burglary (18% to 15%) (Table A10; Figure 4.2).

Figure 4.2: Perceptions of the risk of victimisation (%) in Northern Ireland, 2006/07 to 2009/10



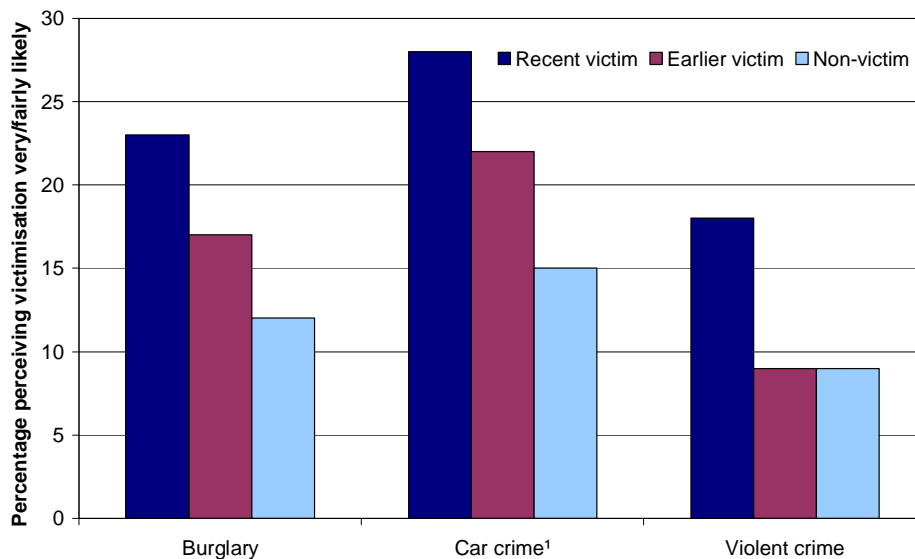
1. Based on respondents residing in households owning, or with regular use of, a vehicle.

## 4.2 Perceptions of the likelihood of victimisation by personal, household and area characteristics

Tables A11 and A12 show the perceived likelihood of NICS 2009/10 respondents that they would be a victim of specific crimes in the next year, broken down by personal, household and area characteristics.

- ◆ Respondents who had been a victim of crime in the past were more likely to perceive themselves to be at risk of further victimisation in the coming year. This disparity is maximised when consideration is given to those who were recent victims of crime (within the preceding two years). Findings from NICS 2009/10 show that recent victims of crime were around twice as likely as non-victims to believe it likely that they would experience all crime types examined: burglary (23% v 12%); car crime (28% v 15%); and violent crime (18% v 9%) (Table A11; Figure 4.3).

Figure 4.3: Perceptions of the risk of victimisation (%) by experience of crime

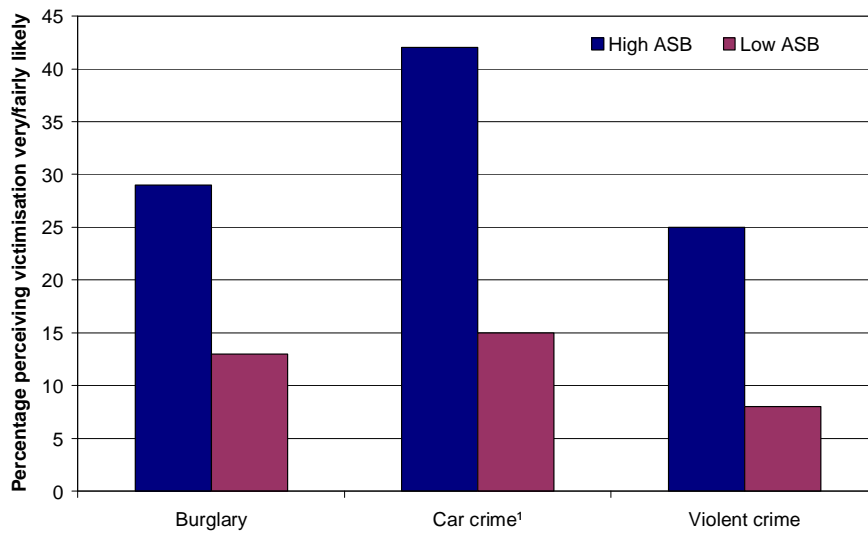


Source: NICS 2009/10

1. Based on respondents residing in households owning, or with regular use of, a vehicle.

- ◆ While there was no simple correlation between deprivation and perceived likelihood of victimisation, respondents residing in the 20% most deprived areas of Northern Ireland were more likely to consider themselves to be at risk of crime in the following twelve months. For instance, a third (34%) of people from the most deprived areas thought it likely they would experience car crime, with 22% fearing burglary, compared with NICS 2009/10 averages of 18% and 15% respectively (Table A12).
- ◆ NICS 2009/10 respondents who stated their nationality to be other than British / Irish / Northern Irish were most likely to consider themselves to be at risk of burglary (25%) and violent crime (21%). These rates compare to NICS 2009/10 averages of 15% and 10% respectively (Tables A11).
- ◆ As with worry about crime, the perceived risk of victimisation varies greatly between areas of high and low ASB. NICS 2009/10 participants in high ASB areas displayed the highest perceived levels of risk of all demographic groups, across each of the crime types examined, at around two or more times the NICS 2009/10 average: violent crime (25% v 10%); car crime (42% v 18%); and burglary (29% v 15%) (Table A12 and Figure 4.4).

Figure 4.4: Perceptions of the risk of victimisation (%) by perceived level of ASB



Source: NICS 2009/10

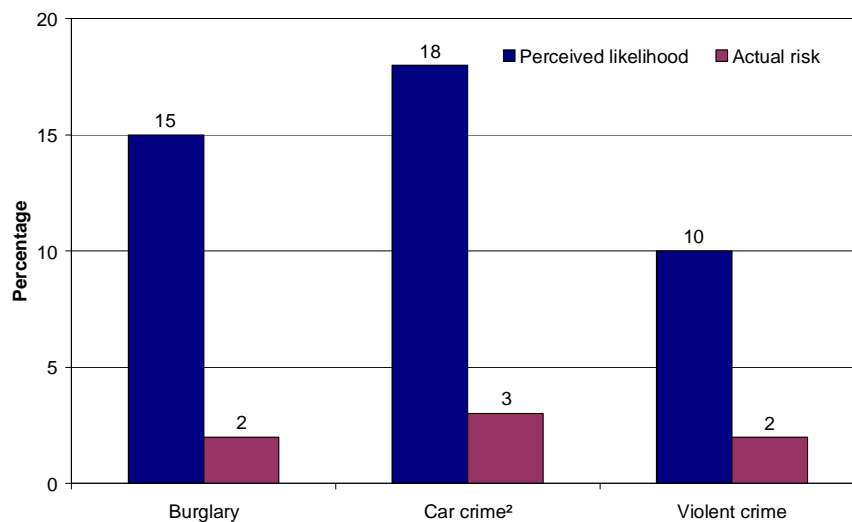
1. Based on respondents residing in households owning, or with regular use of, a vehicle.

### 4.3 Perceptions of the likelihood of victimisation, and actual risk, in Northern Ireland

Findings from NICS 2009/10 reveal a disparity between a person’s perceived likelihood of being a victim of crime and their actual risk (Toner and Freel, 2010), whereby the perceived risk far exceeds the actual risk across each of the crime types considered.

- ◆ NICS 2009/10 results show that 15% of people thought they were very or fairly likely to be a victim of burglary, compared with an actual risk of two per cent. A similar pattern emerged in terms of car crime (18% v 3%) and violent crime (10% v 2%) (Figure 4.5).

Figure 4.5: Perceived likelihood of victimisation and actual risk<sup>1</sup> by individual crime type



Source: NICS 2009/10

1. See Toner & Freel, 2010. ‘Experience of Crime: Findings from the 2009/10 Northern Ireland Crime Survey’.
2. Based on respondents residing in households owning, or with regular use of, a vehicle.

## 5. PERCEPTIONS OF THE EFFECT OF 'FEAR OF CRIME' ON QUALITY OF LIFE

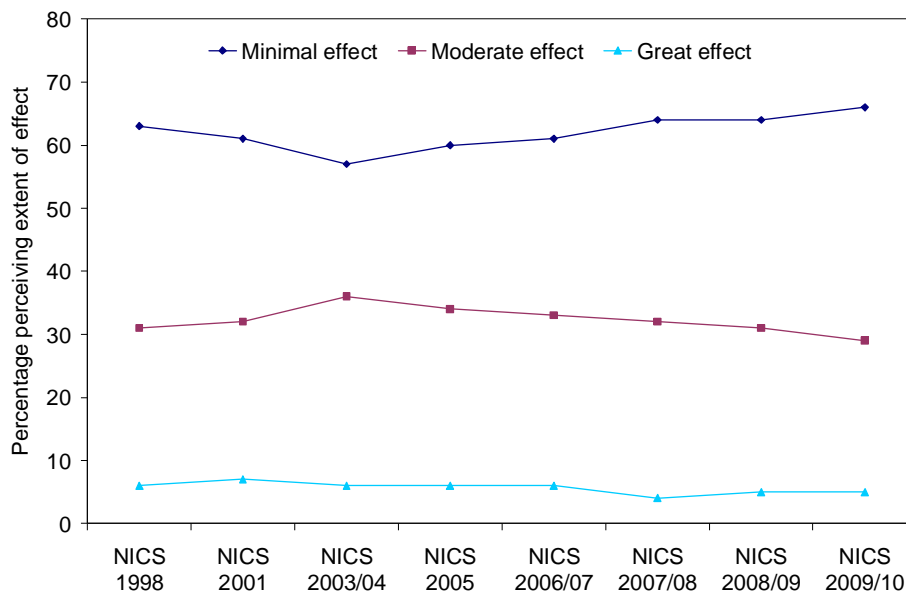
### 5.1 Perceptions of the effect of 'fear of crime' on quality of life in Northern Ireland and England and Wales

While a basic level of concern about crime may be beneficial in that it encourages people to take measures to reduce their risk of victimisation, 'fear (about being a victim) of crime' can become problematic if it has a detrimental impact on a person's quality of life.

Respondents to NICS and BCS are asked how much their own quality of life is affected by their 'fear of crime' on a scale of 1 to 10, where 1 is no effect and 10 is a total effect. In order to standardise the results, the following conventions have been used to gauge the effect of 'fear of crime' on quality of life:

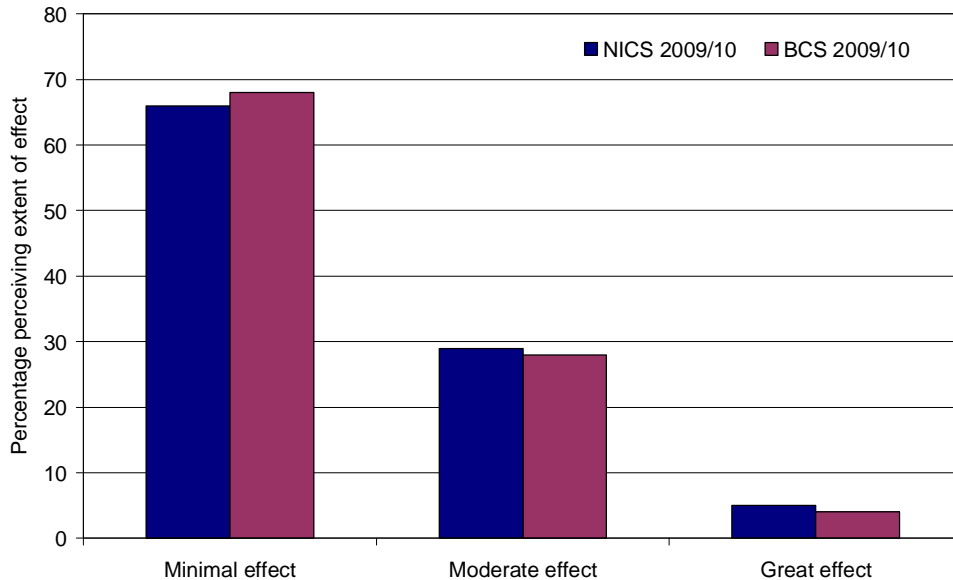
1. minimally affected (responded in the range 1 to 3);
  2. moderately affected (responded in the range 4 to 7); and
  3. greatly affected (responded in the range 8 to 10).
- ◆ Two-thirds (66%) of NICS 2009/10 respondents felt that 'fear of crime' has a minimal impact on their quality of life, with a further 29% claiming it has a moderate effect. The remaining 5% of people considered that their quality of life is greatly affected by their 'fear of crime' (Table A13; Figure 5.1).
  - ◆ While there was no statistically significant change ( $p < 0.05$ ) since NICS 2008/09, the proportion of NICS 2009/10 respondents (66%) stating a 'minimal effect' has increased since 2003/04 when a low of 57% was observed. This increase has been compensated for by subsequent statistically significant reductions ( $p < 0.05$ ) in those claiming a 'moderate' (from 36% to 29%) and 'great' (6% to 5%) effect over the same period (Table A13; Figure 5.1).

Figure 5.1: Perceptions of the effect of 'fear of crime' on quality of life (%) in Northern Ireland



- ◆ Results from NICS 2009/10 are generally on a par with those in England and Wales, with 68% of BCS 2009/10 respondents claiming their lives are minimally affected by ‘fear of crime’, a further 28% stating that it has a moderate impact and 4% claiming it has a great effect on their quality of life (Table A13 and Figure 5.2).

Figure 5.2: Perceptions of the effect of ‘fear of crime’ on quality of life (%) in Northern Ireland and England and Wales



## 5.2 Perceptions of the effect of ‘fear of crime’ on quality of life by personal, household and area characteristics

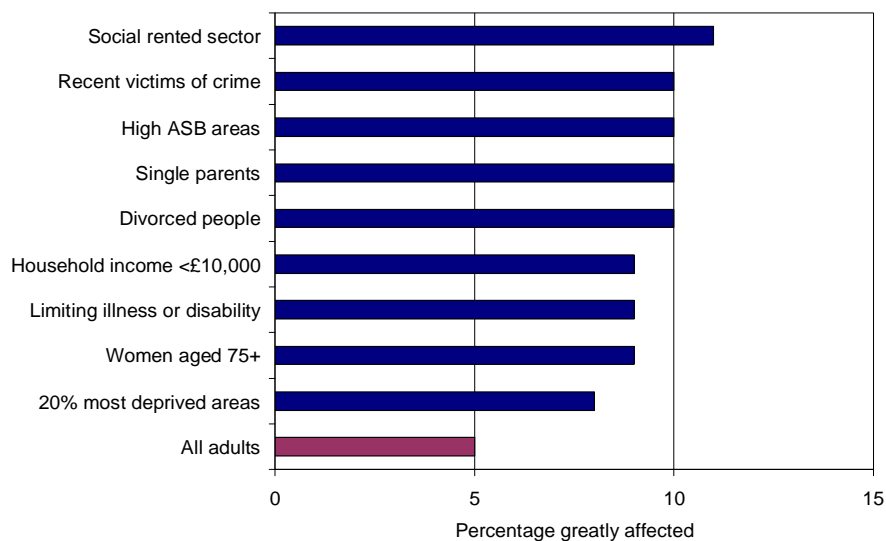
Tables A14 and A15 show differences for NICS 2009/10 respondents in terms of the perceived effect of ‘fear of crime’ on quality of life within various socio-demographic groups in Northern Ireland.

- ◆ Respondents with a long-standing illness or disability (8%), and in particular a limiting illness or disability (9%), were twice as likely than those with no illness or disability (4%) to state their lives are greatly affected by a ‘fear of crime’ (Table A14).
- ◆ In terms of experience of crime, respondents who had been a victim of crime at some point in the past were more likely than those who had never been a victim of crime to state their lives are affected by a ‘fear of crime’. In particular, recent victims of crime (10%) were more than twice as likely as non-victims (4%) to report a great effect (Table A14).
- ◆ While, overall, there appears to be no real difference in the proportion of people living as a couple (4%) and not living as a couple (5%) who consider their lives to be greatly affected by a ‘fear of crime’, those who were divorced (10%) or separated (9%) were more likely than, for example, cohabiting (2%), married (4%) or single (4%) people to report their ‘fear of crime’ greatly affects their quality of life (Table A15).
- ◆ Single parents (10%) were also more likely to report that ‘fear of crime’ has a great effect on their quality of life, compared with households containing either more than one adult or no children (both 4%) (Table A15).

## NICS 2009/10: Perceptions of Crime

- ◆ People in lower income groups tended to be more likely to say their lives are greatly affected by 'fear of crime'. Of those households earning under £10,000 per annum, 9% of respondents thought their lives were greatly affected, a proportion that reduces to just 1% of those from households earning £50,000 or more (Table A15).
- ◆ Respondents living in social rented accommodation (11%) were almost three times as likely as owner-occupiers and private renters (both 4%) to say their 'fear of crime' greatly affects their quality of life (Table A15).
- ◆ Similarly, people living in areas perceived to have high levels of ASB (10%) were more than twice as likely as those from areas of low ASB (4%) to claim a 'fear of crime' greatly affects their quality of life. A further 47% of respondents from high ASB areas claimed a moderate effect, compared with 27% of those from areas where ASB is perceived to be low (Table A15).
- ◆ In terms of deprivation, those living in the 20% most deprived areas of Northern Ireland were more likely to claim a 'fear of crime' had a detrimental effect on their quality of life. Within this group, 8% claimed 'fear of crime' had a great impact, while a further 39% stated a moderate effect. These proportions compare with 3% and 26% (respectively) within the 20% least deprived areas (Table A15).
- ◆ In summary, Tables A14, A15 and Figure 5.3 show that respondents to NICS 2009/10 most likely to state that their lives are greatly affected by 'fear of crime' include:
  - those living in social rented accommodation (11%);
  - recent victims of crime (within the last two years) (10%);
  - residents in areas perceived to have a high level of ASB (10%);
  - single parents (10%);
  - divorced people (10%);
  - households earning less than £10,000 per annum (9%);
  - respondents with a limiting illness or disability (9%);
  - women aged 75+ (9%); and
  - people living in the 20% most deprived areas (8%).

Figure 5.3: Those most likely to perceive their quality of life is greatly affected by 'fear of crime' (%) in Northern Ireland



Source: NICS 2009/10

## REFERENCES

**Campbell, P. and French, B.** (2004). *Perceptions of and concern about crime in Northern Ireland: Findings from the 2003/04 Northern Ireland Crime Survey*. NIO Research and Statistical Bulletin 6/2004. Belfast: NIO.

**Flatley, J., Kershaw, C., Smith, K., Chaplin, R. and Moon, D. (Eds.)** (2010). *Crime in England and Wales 2009/10*. Home Office Statistical Bulletin 12/10. London: Home Office.

**Freel, R. and French, B.** (2006). *Perceptions of crime: Findings from the 2005 Northern Ireland Crime Survey*. NIO Research and Statistical Bulletin 9/2006. Belfast: NIO.

**Freel, R. and Toner, S.** (2010). *Perceptions of Policing, Justice and Organised Crime: Findings from the 2009/10 Northern Ireland Crime Survey*. DOJ Research and Statistical Bulletin 3/2010. Belfast: DOJ.

**French, B. and Campbell, P.** (2002). *Fear of crime in Northern Ireland: Findings from the 2001 Northern Ireland Crime Survey*. NIO Research and Statistical Bulletin 5/2002. Belfast: NIO.

**French, B. and Freel, R.** (2008). *Perceptions of crime: Findings from the 2006/07 Northern Ireland Crime Survey*. NIO Research and Statistical Bulletin 5/2008. Belfast: NIO.

**Power, M., Willis, M. and Amelin, K.** (1999). *Fear of crime and victimisation in Northern Ireland*. NIO Research Findings 1/99. Belfast: NIO.

**Quigley, D. and Freel, R.** (2008). *Perceptions of crime: Findings from the 2007/08 Northern Ireland Crime Survey*. NIO Research and Statistical Bulletin 17/2008. Belfast: NIO.

**Quigley, D. and Freel, R.** (2010). *Perceptions of Crime: Findings from the 2008/09 Northern Ireland Crime Survey*. NIO Research and Statistical Bulletin 1/2010. Belfast: NIO.

**Toner, S. and Freel, R.** (2010). *Experience of Crime: Findings from the 2009/10 Northern Ireland Crime Survey*. DOJ Research and Statistical Bulletin 4/2010. Belfast: DOJ.

## TABULAR ANNEX

Table A1: Perceptions of the causes of crime (%) in Northern Ireland<sup>1,2,3</sup>

	Major causes of crime	Main cause of crime
Drugs	70	22
Alcohol	67	14
Lack of discipline from parents	62	25
Too lenient sentencing	39	11
Sectarianism	35	7
Unemployment	32	5
Breakdown of the family	31	5
Too few police	25	3
Lack of discipline from school	23	2
Racism	20	1
Poverty	18	3
None of these	1	3
<i>Unweighted base</i>	<i>4,102</i>	<i>3,844</i>

Source: NICS 2009/10

1. Results exclude don't knows and refusals.
2. Respondents were asked to select from a list the factors they considered to be the major causes of crime in Northern Ireland today. If respondents selected more than one factor they were asked which of the factors they believed to be the main cause of crime.
3. Percentages may add to more than 100 as respondents could select more than one cause.

Table A2: Perceptions of changes in overall crime levels (%) in Northern Ireland and England and Wales<sup>1</sup>

	NICS 2003/04	NICS 2005	NICS 2006/07	NICS 2007/08	NICS 2008/09	NICS 2009/10	Statistically significant change, 2008/09 to 2009/10? <sup>3</sup>	BCS 2009/10
<b>More crime<sup>2</sup></b>	<b>79</b>	<b>74</b>	<b>73</b>	<b>65</b>	<b>64</b>	<b>64</b>		<b>66</b>
A lot more crime	49	42	40	34	32	31		33
A little more crime	30	32	33	32	31	33		33
Same	14	17	18	20	23	24		29
Less crime	7	9	10	14	13	11		4
<i>Unweighted base</i>	<i>2,704</i>	<i>3,578</i>	<i>3,678</i>	<i>3,790</i>	<i>3,737</i>	<i>3,977</i>		<i>10,966</i>

1. Results exclude don't knows and refusals.
2. The proportion of respondents believing there has been 'a little more crime' or 'a lot more crime'.
3. Statistical significance of change at the 5% level (two-tailed test) is indicated by a double asterisk (\*\*).

Table A3: Perceptions of changes in local crime levels (%) in Northern Ireland and England and Wales<sup>1,2</sup>

	NICS 1998	NICS 2001	NICS 2003/04	NICS 2005	NICS 2006/07	NICS 2007/08	NICS 2008/09	NICS 2009/10	Statistically significant change, 2008/09 to 2009/10? <sup>4</sup>	BCS 2009/10
<b>More crime<sup>3</sup></b>	<b>41</b>	<b>55</b>	<b>52</b>	<b>44</b>	<b>44</b>	<b>39</b>	<b>36</b>	<b>35</b>		<b>31</b>
A lot more crime	14	26	22	17	17	14	14	12		10
A little more crime	27	29	30	27	27	25	22	23		20
Same	47	36	36	42	42	45	48	49		54
Less crime	12	8	12	13	14	16	16	16		15
<i>Unweighted base</i>	<i>2,648</i>	<i>2,597</i>	<i>2,644</i>	<i>3,076</i>	<i>3,171</i>	<i>3,295</i>	<i>3,291</i>	<i>3,495</i>		<i>10,966</i> <sup>5</sup>

1. Results exclude don't knows and refusals.
2. Based on respondents who had been living in their area for more than three years.
3. The proportion of respondents believing there has been 'a little more crime' or 'a lot more crime'.
4. Statistical significance of change at the 5% level (two-tailed test) is indicated by a double asterisk (\*\*).
5. BCS unweighted base refers to perceived change in national crime level. Base for local crime level will be similar.

## NICS 2009/10: Perceptions of Crime

Table A4: Perceptions of different types of anti-social behaviour as very / fairly big problems (%) in Northern Ireland and England and Wales<sup>1</sup>

	NICS 1998	NICS 2001	NICS 2003/04	NICS 2005	NICS 2006/07	NICS 2007/08	NICS 2008/09	NICS 2009/10	Statistically significant change, 2008/09 to 2009/10 <sup>3</sup>	BCS 2009/10
<b>Perceived high level of ASB<sup>2</sup></b>	-	-	21	17	15	15	14	13		14
Abandoned or burnt-out cars	-	8	10	8	7	6	5	5		5
Noisy neighbours or loud parties	6	7	8	10	8	8	8	8		11
People being drunk or rowdy in public places	-	-	24	25	23	25	24	22		24
People using or dealing drugs	21	29	31	28	26	26	24	23		26
Teenagers hanging around on streets	20	33	31	29	27	28	26	26		27
Rubbish or litter lying around	22	27	29	28	27	27	28	28		28
Vandalism, graffiti and other deliberate damage to property	23	32	28	26	23	22	23	22		23
<i>Unweighted base<sup>4</sup></i>	3,058	3,007	3,104	3,686	3,788	3,932	3,855	4,098		42,390 <sup>5</sup>

<sup>1</sup> Denotes indicator was not included in survey.

1. Results exclude don't knows and refusals.

2. ASB: Anti-social behaviour (measure derived from responses to the seven individual strands in the table).

3. Statistical significance of change at the 5% level (two-tailed test) is indicated by a double asterisk (\*\*).

4. Unweighted base refers to rubbish or litter lying around. Other bases will be similar.

5. BCS unweighted base refers to people using or dealing drugs. Other BCS bases will be similar.

NICS 2009/10: Perceptions of Crime

Table A5: Perceptions of anti-social behaviour, by personal characteristics (%) in Northern Ireland<sup>1</sup>

	% saying 'very' or 'fairly' big problem							Perceived high level of ASB <sup>2</sup>	Unweighted base <sup>3</sup>
	Abandoned or burnt-out cars	Noisy neighbours or loud parties	People being drunk or rowdy in public places	People using or dealing drugs	Teenagers hanging around on streets	Rubbish or litter lying around	Vandalism, graffiti and other deliberate damage to property		
<b>ALL ADULTS</b>	<b>5</b>	<b>8</b>	<b>22</b>	<b>23</b>	<b>26</b>	<b>28</b>	<b>22</b>	<b>13</b>	<b>4,098</b>
<b>Age (3 groups)</b>									
16-29	8	12	32	28	32	29	28	19	661
30-59	6	8	23	24	29	27	23	13	2,127
60+	3	5	13	16	17	27	17	6	1,300
<b>Age (7 groups)</b>									
16-24	9	12	34	29	32	30	29	21	372
25-34	7	11	27	24	30	30	25	14	659
35-44	5	10	25	23	31	25	23	14	741
45-54	7	7	21	27	27	28	25	15	698
55-64	4	6	18	21	23	30	20	10	649
65-74	2	5	13	18	19	28	17	6	552
75+	2	3	10	10	10	19	11	4	417
<b>Men</b>	<b>5</b>	<b>8</b>	<b>22</b>	<b>22</b>	<b>25</b>	<b>28</b>	<b>22</b>	<b>12</b>	<b>1,810</b>
16-24	8	10	34	28	29	29	27	19	170
25-34	6	12	28	25	29	28	27	16	267
35-44	5	10	27	21	31	27	24	13	331
45-54	8	7	19	23	25	27	24	12	334
55-64	5	6	18	20	21	31	19	8	309
65-74	2	5	12	17	20	27	16	5	226
75+	1	3	10	12	8	22	14	4	173
<b>Women</b>	<b>5</b>	<b>8</b>	<b>22</b>	<b>24</b>	<b>27</b>	<b>28</b>	<b>22</b>	<b>13</b>	<b>2,278</b>
16-24	9	13	35	30	35	31	30	23	202
25-34	7	11	26	24	31	31	23	12	392
35-44	5	10	24	26	32	24	21	14	410
45-54	6	8	22	30	29	29	25	17	364
55-64	4	6	17	21	24	29	20	12	340
65-74	1	4	14	18	18	28	18	6	326
75+	2	3	10	8	11	17	9	4	244
<b>Religion</b>									
Catholic	9	9	27	30	31	29	27	18	1,649
Protestant	3	7	18	18	22	26	18	9	2,139
<b>Perceived nationality</b>									
British	3	8	18	20	23	26	18	9	1,975
Irish	10	9	28	30	32	31	29	19	1,092
Northern Irish	4	7	21	20	25	26	22	11	848
Other	6	13	35	23	29	29	21	17	142
<b>Disability or illness</b>									
Long-standing illness or disability	6	9	21	25	27	33	25	15	1,170
Limits activities	7	9	22	26	27	33	28	16	918
Does not limit activities	2	8	18	23	24	31	18	13	252
No long-standing illness or disability	5	8	23	22	26	26	21	12	2,917
<b>Experience of crime reported to police</b>									
Victim	7	10	26	26	31	33	28	16	1,715
Within last 2 years	10	14	34	31	40	40	37	22	526
More than 2 years ago	6	8	22	24	26	29	24	13	1,189
Never a victim	4	7	19	21	23	24	18	10	2,367
<b>Daily newspaper readership</b>									
National broadsheets	4	9	19	16	24	27	21	10	471
National tabloids	5	9	25	26	27	29	23	14	1,855
Irish News	9	9	27	31	30	32	25	18	612
Newsletter	2	5	12	15	16	26	15	6	397
Belfast Telegraph	4	9	21	19	24	27	21	11	1,157

Source: NICS 2009/10

1. Results exclude don't knows and refusals.
2. ASB: Anti-social behaviour (measure derived from responses to the seven individual strands in Table A4).
3. Unweighted base refers to rubbish or litter lying around. Other bases will be similar.

NICS 2009/10: Perceptions of Crime

Table A6: Perceptions of anti-social behaviour, by household and area characteristics (%) in Northern Ireland<sup>1</sup>

	% saying 'very' or 'fairly' big problem							Perceived high level of ASB <sup>2</sup>	Unweighted base <sup>6</sup>
	Abandoned or burnt-out cars	Noisy neighbours or loud parties	People being drunk or rowdy in public places	People using or dealing drugs	Teenagers hanging around on streets	Rubbish or litter lying around	Vandalism, graffiti and other deliberate damage to property		
<b>ALL ADULTS</b>	<b>5</b>	<b>8</b>	<b>22</b>	<b>23</b>	<b>26</b>	<b>28</b>	<b>22</b>	<b>13</b>	<b>4,098</b>
<b>Living arrangements (respondent)</b>									
Living as a couple	5	7	20	21	25	27	20	11	2,183
Married	4	6	18	20	24	27	19	10	1,950
Cohabiting	7	14	33	26	35	27	27	16	233
Not living as a couple	7	9	26	27	28	29	26	16	1,905
Single	7	10	29	27	31	31	28	18	985
Separated	6	12	30	36	32	34	28	20	196
Divorced	11	11	29	34	29	35	32	20	231
Widowed	4	5	14	19	16	21	14	7	493
<b>Household type<sup>3</sup></b>									
HRP aged under 60:									
Single adult & child(ren)	11	16	43	41	47	37	38	30	281
Adults & child(ren)	7	9	25	25	30	27	25	15	993
No children	5	9	25	24	26	28	23	14	1,435
HRP aged 60 and over	3	4	14	17	19	26	17	7	1,389
<b>Household income</b>									
Less than £10,000	8	12	28	32	30	34	28	19	849
£10,000 less than £20,000	6	9	27	27	28	30	26	16	1,085
£20,000 less than £30,000	5	8	20	23	27	26	20	11	669
£30,000 less than £40,000	4	7	21	21	27	29	22	10	421
£40,000 less than £50,000	5	3	19	18	22	26	21	11	287
£50,000 or more	3	4	16	16	21	20	17	8	313
<b>Tenure</b>									
Owner-occupied	4	6	17	19	23	25	19	9	2,733
Social rented	13	16	38	43	43	41	40	31	609
Private rented	5	12	30	25	28	28	24	15	730
<b>Area type</b>									
Belfast	7	14	29	29	37	36	35	20	639
Urban, excluding Belfast	7	10	28	28	31	31	27	16	1,715
All urban	7	11	28	28	32	32	29	17	2,354
Rural	3	5	15	17	18	22	14	8	1,744
<b>Policing District<sup>4</sup></b>									
A&B (Belfast)	7	14	29	30	37	36	35	20	642
C	2	5	18	19	23	23	20	8	715
D	5	8	20	22	27	29	22	14	634
E	5	9	25	25	25	28	17	13	636
F	4	5	14	14	15	17	14	8	451
G	11	8	27	25	29	28	24	15	525
H	5	7	22	26	23	30	24	11	494
<b>Multiple Deprivation Measure rank<sup>5</sup></b>									
1st quintile Most deprived	16	16	41	46	47	48	43	31	761
2nd quintile	5	8	26	25	27	27	25	14	841
3rd quintile	3	8	18	17	20	25	17	9	809
4th quintile	3	6	15	18	19	23	15	8	814
5th quintile Least deprived	2	4	14	13	21	18	15	6	772

Source: NICS 2009/10

1. Results exclude don't knows and refusals.
2. ASB: Anti-social behaviour (measure derived from responses to the seven individual strands in Table A4).
3. HRP: Household Reference Person (in order of sequence, the person who owns or rents the accommodation, highest earner or oldest person).
4. See Figure B1 in Tabular Annex. When combined, PSNI policing districts A and B equate to Belfast City Council area.
5. Rank order of super output areas (derived from 2010 Northern Ireland Multiple Deprivation Measure).
6. Unweighted base refers to rubbish or litter lying around. Other bases will be similar.

## NICS 2009/10: Perceptions of Crime

Table A7: Worry about crime and personal safety (%) in Northern Ireland and England and Wales<sup>1</sup>

	NICS 1998	NICS 2001	NICS 2003/04	NICS 2005	NICS 2006/07	NICS 2007/08	NICS 2008/09	NICS 2009/10	Statistically significant change, 2008/09 to 2009/10 <sup>3</sup>	BCS 2009/10
<b>High level of worry about:</b>										
Burglary	17	17	21	18	17	16	15	16		10
Car crime <sup>2</sup>	18	21	20	17	15	15	14	13		10
Violent crime	23	23	24	23	22	19	18	20		13
<b>% very worried about:</b>										
Crime overall	-	-	-	-	-	9	8	8		7
<b>% feeling very unsafe about:</b>										
Walking alone in area after dark	8	11	13	11	11	12	10	10		8
Alone in home at night	1	1	2	2	2	2	2	2		1
<i>Unweighted base<sup>4</sup></i>	<i>3,057</i>	<i>3,010</i>	<i>3,104</i>	<i>3,691</i>	<i>3,790</i>	<i>3,933</i>	<i>3,856</i>	<i>4,102</i>		<i>11,167</i>

<sup>1</sup> Denotes indicator was not included in survey.

1. Results exclude don't knows and refusals.

2. Based on respondents residing in households owning, or with regular use of, a vehicle.

3. Statistical significance of change at the 5% level (two-tailed test) is indicated by a double asterisk (\*\*).

4. Unweighted base refers to worry about burglary. Other bases will be similar with the exception of car crime which is based on vehicle-owners only.

NICS 2009/10: Perceptions of Crime

Table A8: Worry about crime and personal safety, by personal characteristics (%) in Northern Ireland<sup>1</sup>

	% with high levels of worry about			% very worried	% feeling very unsafe		Unweighted base <sup>3</sup>
	Burglary	Car crime <sup>2</sup>	Violent crime	Overall worry about all types of crime	Walking alone in area after dark	Alone in home at night	
<b>ALL ADULTS</b>	<b>16</b>	<b>13</b>	<b>20</b>	<b>8</b>	<b>10</b>	<b>2</b>	<b>4,102</b>
<b>Age</b>							
16-29	13	18	24	9	4	2	661
30-59	16	13	19	7	8	1	2,128
60+	17	11	18	9	16	2	1,303
16-24	14	23	29	10	5	3	372
25-34	14	11	18	7	5	2	659
35-44	15	14	19	8	7	2	741
45-54	16	14	19	7	9	2	699
55-64	16	12	17	9	11	1	650
65-74	17	12	19	9	15	2	552
75+	17	9	17	8	21	3	419
<b>Men</b>	<b>13</b>	<b>11</b>	<b>10</b>	<b>6</b>	<b>4</b>	<b>1</b>	<b>1,810</b>
16-24	10	n<100	15	6	<0.5	0	170
25-34	13	12	11	6	2	1	267
35-44	12	11	9	5	4	1	331
45-54	13	11	9	4	5	1	334
55-64	14	9	8	7	5	<0.5	309
65-74	12	9	14	6	6	2	226
75+	15	7	8	4	12	1	173
<b>Women</b>	<b>18</b>	<b>16</b>	<b>27</b>	<b>10</b>	<b>14</b>	<b>3</b>	<b>2,282</b>
16-24	18	26	42	14	9	5	202
25-34	15	11	24	7	8	2	392
35-44	17	16	26	11	10	2	410
45-54	19	16	28	9	14	3	365
55-64	18	15	25	10	17	1	341
65-74	21	14	23	12	23	3	326
75+	19	10	25	10	29	5	246
<b>Religion</b>							
Catholic	17	15	21	10	12	3	1,650
Protestant	14	12	19	7	9	1	2,139
<b>Perceived nationality</b>							
British	16	13	20	8	10	2	1,976
Irish	18	16	22	9	13	2	1,093
Northern Irish	11	11	14	6	6	1	848
Other	19	n<100	26	13	7	2	142
<b>Disability or illness</b>							
Long-standing illness or disability	21	19	25	11	17	3	1,171
Limits activities	22	21	25	12	19	4	919
Does not limit activities	16	13	24	7	11	2	252
No long-standing illness or disability	14	12	18	7	7	1	2,918
<b>Experience of crime reported to police</b>							
Victim	17	15	19	9	10	3	1,716
Within last 2 years	21	19	22	12	12	5	527
More than 2 years ago	15	13	17	8	10	2	1,189
Never a victim	15	12	20	7	9	1	2,368
<b>Daily newspaper readership</b>							
National broadsheets	10	9	14	6	5	1	471
National tabloids	17	16	22	9	8	2	1,855
Irish News	17	15	21	10	13	3	612
Newsletter	16	12	18	8	8	1	397
Belfast Telegraph	14	14	19	7	7	2	1,157

Source: NICS 2009/10

1. Results exclude don't knows and refusals.
2. Based on respondents residing in households owning, or with regular use of, a vehicle.
3. Unweighted base refers to worry about burglary. Other bases will be similar with the exception of car crime which is based on vehicle-owners only.

NICS 2009/10: Perceptions of Crime

Table A9: Worry about crime and personal safety, by household and area characteristics (%) in Northern Ireland<sup>1</sup>

	% with high levels of worry about			% very worried	% feeling very unsafe		Unweighted base <sup>7</sup>
	Burglary	Car crime <sup>2</sup>	Violent crime	Overall worry about all types of crime	Walking alone in area after dark	Alone in home at night	
<b>ALL ADULTS</b>	<b>16</b>	<b>13</b>	<b>20</b>	<b>8</b>	<b>10</b>	<b>2</b>	<b>4,102</b>
<b>Living arrangements (respondent)</b>							
Living as a couple	15	12	17	7	9	1	2,183
Married	15	12	17	7	9	1	1,950
Cohabiting	14	16	20	7	6	2	233
Not living as a couple	17	16	24	10	11	3	1,909
Single	15	18	24	10	7	3	986
Separated	20	18	25	8	14	4	197
Divorced	23	18	26	14	16	3	231
Widowed	19	10	21	10	23	2	495
<b>Household type<sup>3</sup></b>							
HRP aged under 60:							
Single adult & child(ren)	27	18	33	17	11	5	281
Adults & child(ren)	14	14	21	9	7	2	993
No children	15	14	18	6	8	2	1,436
HRP aged 60 and over	17	11	19	9	15	2	1,392
<b>Household income</b>							
Less than £10,000	23	19	29	14	19	4	849
£10,000 less than £20,000	18	16	21	10	12	2	1,086
£20,000 less than £30,000	14	14	16	6	8	1	669
£30,000 less than £40,000	12	10	17	5	5	1	421
£40,000 less than £50,000	10	10	15	6	6	1	287
£50,000 or more	7	6	8	3	4	<0.5	313
<b>Tenure</b>							
Owner-occupied	14	11	17	7	9	1	2,735
Social rented	26	27	29	17	17	5	609
Private rented	16	17	24	7	8	3	730
<b>Area type</b>							
Belfast	17	22	22	11	11	3	639
Urban, excluding Belfast	17	14	22	9	11	2	1,717
All urban	17	16	22	9	11	2	2,356
Rural	14	11	17	7	8	1	1,746
<b>Policing District<sup>4</sup></b>							
A&B (Belfast)	17	22	22	11	11	3	642
C	13	11	18	8	6	1	716
D	21	16	22	7	11	2	635
E	16	15	25	10	11	2	637
F	13	10	13	4	9	1	452
G	16	12	19	8	13	1	525
H	12	9	15	8	7	2	494
<b>Multiple Deprivation Measure rank<sup>5</sup></b>							
1st quintile Most deprived	23	26	27	14	15	3	762
2nd quintile	16	13	19	8	9	2	841
3rd quintile	14	12	20	6	9	2	810
4th quintile	14	12	19	8	10	1	814
5th quintile Least deprived	11	11	14	5	6	1	774
<b>Perceived level of ASB<sup>6</sup></b>							
High	30	33	37	20	20	5	489
Low	13	11	16	6	7	1	3,257

Source: NICS 2009/10

1. Results exclude don't knows and refusals.
2. Based on respondents residing in households owning, or with regular use of, a vehicle.
3. HRP: Household Reference Person (in order of sequence, the person who owns or rents the accommodation, highest earner or oldest person).
4. See Figure B1 in Tabular Annex. When combined, PSNI policing districts A and B equate to Belfast City Council area.
5. Rank order of super output areas (derived from 2010 Northern Ireland Multiple Deprivation Measure).
6. ASB: Anti-social behaviour (measure derived from responses to the seven individual strands in Table A4).
7. Unweighted base refers to worry about burglary. Other bases will be similar with the exception of car crime which is based on vehicle-owners only.

## NICS 2009/10: Perceptions of Crime

Table A10: Perceptions of the risk of victimisation (%) in Northern Ireland and England and Wales<sup>1</sup>

% perceiving it likely that they will be a victim within the next year of:	NICS 2006/07	NICS 2007/08	NICS 2008/09	NICS 2009/10	Statistically significant change, 2008/09 to 2009/10 <sup>3</sup>	BCS 2009/10
Burglary	18	16	15	15		15
Car crime <sup>2</sup>	26	22	20	18		21
Violent crime	15	12	11	10		15
<i>Unweighted base<sup>4</sup></i>	3,708	3,855	3,774	4,006		10,911

1. Results exclude don't knows and refusals.

2. Based on respondents residing in households owning, or with regular use of, a vehicle.

3. Statistical significance of change at the 5% level (two-tailed test) is indicated by a double asterisk (\*\*).

4. Unweighted base refers to perceived likelihood of being a victim of burglary. Bases for violent crime will be similar but will be lower for car crime which is based on vehicle-owners only.

NICS 2009/10: Perceptions of Crime

Table A11: Perceptions of the risk of victimisation, by personal characteristics (%) in Northern Ireland<sup>1</sup>

	% perceiving it likely that they will be a victim in the next year			Unweighted base <sup>3</sup>
	Burglary	Car crime <sup>2</sup>	Violent crime	
<b>ALL ADULTS</b>	<b>15</b>	<b>18</b>	<b>10</b>	<b>4,006</b>
<b>Age</b>				
16-29	12	18	15	652
30-59	17	20	9	2,074
60+	14	15	8	1,270
16-24	11	19	17	368
25-34	17	20	12	647
35-44	15	17	9	725
45-54	18	24	9	681
55-64	16	16	8	629
65-74	13	15	7	539
75+	12	11	6	407
<b>Men</b>	<b>14</b>	<b>16</b>	<b>10</b>	<b>1,772</b>
16-24	9	19	17	169
25-34	15	17	13	263
35-44	14	16	9	324
45-54	13	18	7	325
55-64	18	13	8	302
65-74	14	17	8	222
75+	9	9	8	167
<b>Women</b>	<b>16</b>	<b>21</b>	<b>10</b>	<b>2,224</b>
16-24	12	19	17	199
25-34	19	22	10	384
35-44	16	19	10	401
45-54	22	31	11	356
55-64	15	19	9	327
65-74	12	13	6	317
75+	15	13	5	240
<b>Religion</b>				
Catholic	17	21	11	1,614
Protestant	13	16	9	2,103
<b>Perceived nationality</b>				
British	14	17	8	1,937
Irish	17	21	12	1,070
Northern Irish	14	18	9	837
Other	25	n<100	21	136
<b>Disability or illness</b>				
Long-standing illness or disability	17	22	12	1,137
Limits activities	18	22	12	893
Does not limit activities	13	20	9	244
No long-standing illness or disability	14	17	9	2,867
<b>Experience of crime reported to police</b>				
Victim	19	23	12	1,682
Within last 2 years	23	28	18	517
More than 2 years ago	17	22	9	1,165
Never a victim	12	15	9	2,320
<b>Daily newspaper readership</b>				
National broadsheets	16	18	7	462
National tabloids	15	19	11	1,827
Irish News	19	25	13	604
Newsletter	16	14	9	395
Belfast Telegraph	14	18	8	1,137

Source: NICS 2009/10

1. Results exclude don't knows and refusals.
2. Based on respondents residing in households owning, or with regular use of, a vehicle.
3. Unweighted base refers to perceived likelihood of being a victim of burglary. Bases for violent crime will be similar but will be lower for car crime which is based on vehicle-owners only.

NICS 2009/10: Perceptions of Crime

Table A12: Perceptions of the risk of victimisation, by household and area characteristics (%) in Northern Ireland<sup>1</sup>

	% perceiving it likely that they will be a victim in the next year			Unweighted base <sup>7</sup>
	Burglary	Car crime <sup>2</sup>	Violent crime	
<b>ALL ADULTS</b>	<b>15</b>	<b>18</b>	<b>10</b>	<b>4,006</b>
<b>Living arrangements (respondent)</b>				
Living as a couple	16	18	8	2,143
Married	16	18	8	1,915
Cohabiting	11	17	10	228
Not living as a couple	14	19	13	1,853
Single	13	17	16	963
Separated	19	25	8	190
Divorced	23	31	12	220
Widowed	13	17	8	480
<b>Household type<sup>3</sup></b>				
HRP aged under 60:				
Single adult & child(ren)	21	23	18	271
Adults & child(ren)	16	20	11	977
No children	15	20	10	1,399
HRP aged 60 and over	13	15	8	1,359
<b>Household income</b>				
Less than £10,000	19	24	14	827
£10,000 less than £20,000	16	18	12	1,071
£20,000 less than £30,000	15	20	11	658
£30,000 less than £40,000	11	17	9	414
£40,000 less than £50,000	17	21	7	285
£50,000 or more	12	14	3	311
<b>Tenure</b>				
Owner-occupied	15	18	8	2,683
Social rented	20	26	16	594
Private rented	14	18	14	717
<b>Area type</b>				
Belfast	19	29	14	626
Urban, excluding Belfast	14	18	11	1,676
All urban	15	20	11	2,302
Rural	15	17	8	1,704
<b>Policing District<sup>4</sup></b>				
A&B	19	29	14	629
C	8	13	5	688
D	17	23	9	630
E	23	23	12	625
F	13	13	9	445
G	12	15	11	504
H	13	14	10	484
<b>Multiple Deprivation Measure rank<sup>5</sup></b>				
1st quintile Most deprived	22	34	16	733
2nd quintile	11	14	9	821
3rd quintile	15	18	9	800
4th quintile	15	17	10	795
5th quintile Least deprived	12	16	7	759
<b>Perceived level of ASB<sup>6</sup></b>				
High	29	42	25	475
Low	13	15	8	3,197

Source: NICS 2009/10

1. Results exclude don't knows and refusals.
2. Based on respondents residing in households owning, or with regular use of, a vehicle.
3. HRP: Household Reference Person (in order of sequence, the person who owns or rents the accommodation, highest earner or oldest person).
4. See Figure B1 in Tabular Annex. When combined, PSNI policing districts A and B equate to Belfast City Council area.
5. Rank order of super output areas (derived from 2010 Northern Ireland Multiple Deprivation Measure).
6. ASB: Anti-social behaviour (measure derived from responses to the seven individual strands in Table A4).
7. Unweighted base refers to perceived likelihood of being a victim of burglary. Bases for violent crime will be similar but will be lower for car crime which is based on vehicle-owners only.

## NICS 2009/10: Perceptions of Crime

Table A13: Perceptions of the effect of 'fear of crime' on quality of life (%) in Northern Ireland and England and Wales<sup>1</sup>

	NICS 1998	NICS 2001	NICS 2003/04	NICS 2005	NICS 2006/07	NICS 2007/08	NICS 2008/09	NICS 2009/10	Statistically significant change, 2008/09 to 2009/10? <sup>2</sup>	BCS 2009/10
Minimal	63	61	57	60	61	64	64	66		68
Moderate	31	32	36	34	33	32	31	29		28
Great	6	7	6	6	6	4	5	5		4
<i>Unweighted base</i>	<i>3,049</i>	<i>3,008</i>	<i>3,099</i>	<i>3,691</i>	<i>3,789</i>	<i>3,929</i>	<i>3,854</i>	<i>4,099</i>		<i>5,520</i>

1. Results exclude don't knows and refusals.

2. Statistical significance of change at the 5% level (two-tailed test) is indicated by a double asterisk (\*\*).

NICS 2009/10: Perceptions of Crime

Table A14: Perceptions of the effect of 'fear of crime' on quality of life, by personal characteristics (%) in Northern Ireland<sup>1</sup>

	Minimal	Moderate	Great	Unweighted base
<b>ALL ADULTS</b>	<b>66</b>	<b>29</b>	<b>5</b>	<b>4,099</b>
<b>Age</b>				
16-29	70	28	3	661
30-59	64	31	5	2,127
60+	66	28	6	1,301
16-24	68	29	3	372
25-34	68	28	4	659
35-44	64	32	4	741
45-54	64	31	5	698
55-64	65	30	5	650
65-74	68	26	6	552
75+	67	27	6	417
<b>Men</b>	<b>71</b>	<b>26</b>	<b>3</b>	<b>1,809</b>
16-24	76	23	1	170
25-34	70	29	2	267
35-44	69	28	3	331
45-54	69	29	2	333
55-64	69	27	4	309
65-74	78	16	6	226
75+	73	24	4	173
<b>Women</b>	<b>61</b>	<b>32</b>	<b>6</b>	<b>2,280</b>
16-24	61	34	5	202
25-34	67	28	5	392
35-44	60	34	5	410
45-54	59	33	7	365
55-64	61	33	6	341
65-74	60	34	6	326
75+	61	30	9	244
<b>Religion</b>				
Catholic	62	32	6	1,650
Protestant	68	28	4	2,138
<b>Perceived nationality</b>				
British	67	28	5	1,975
Irish	64	31	5	1,093
Northern Irish	68	29	3	847
Other	57	38	5	141
<b>Disability or illness</b>				
Long-standing illness or disability	59	33	8	1,169
Limits activities	57	34	9	917
Does not limit activities	65	31	4	252
No long-standing illness or disability	68	28	4	2,917
<b>Experience of crime reported to police</b>				
Victim	61	33	6	1,716
Within last 2 years	53	37	10	527
More than 2 years ago	65	31	4	1,189
Never a victim	69	27	4	2,365
<b>Daily newspaper readership</b>				
National broadsheets	71	27	2	471
National tabloids	64	32	5	1,855
Irish News	62	32	6	612
Newsletter	63	33	4	397
Belfast Telegraph	67	30	4	1,156

Source: NICS 2009/10

1. Results exclude don't knows and refusals.

NICS 2009/10: Perceptions of Crime

Table A15: Perceptions of the effect of 'fear of crime' on quality of life, by household and area characteristics (%) in Northern Ireland<sup>1</sup>

	Minimal	Moderate	Great	Unweighted base
<b>ALL ADULTS</b>	<b>66</b>	<b>29</b>	<b>5</b>	<b>4,099</b>
<b>Living arrangements (respondent)</b>				
Living as a couple	66	30	4	2,182
Married	66	29	4	1,949
Cohabiting	65	33	2	233
Not living as a couple	66	29	5	1,907
Single	68	28	4	986
Separated	63	28	9	195
Divorced	56	34	10	231
Widowed	65	29	6	495
<b>Household type<sup>2</sup></b>				
HRP aged under 60:				
Single adult & child(ren)	58	33	10	281
Adults & child(ren)	65	31	4	993
No children	67	29	4	1,435
HRP aged 60 and over	66	28	6	1,390
<b>Household income</b>				
Less than £10,000	58	33	9	847
£10,000 less than £20,000	63	31	6	1,085
£20,000 less than £30,000	66	30	4	669
£30,000 less than £40,000	69	29	3	421
£40,000 less than £50,000	68	28	4	287
£50,000 or more	79	20	1	313
<b>Tenure</b>				
Owner-occupied	67	29	4	2,735
Social rented	58	31	11	607
Private rented	67	30	4	729
<b>Area type</b>				
Belfast	60	33	7	639
Urban, excluding Belfast	63	32	5	1,715
All urban	62	33	5	2,354
Rural	70	26	4	1,745
<b>Policing District<sup>3</sup></b>				
A&B	60	33	7	642
C	67	30	4	716
D	62	32	6	633
E	64	31	5	637
F	70	25	5	451
G	68	28	3	525
H	72	25	3	494
<b>Multiple Deprivation Measure rank<sup>4</sup></b>				
1st quintile Most deprived	53	39	8	760
2nd quintile	68	28	4	841
3rd quintile	69	27	4	809
4th quintile	67	29	4	814
5th quintile Least deprived	71	26	3	774
<b>Perceived level of ASB<sup>5</sup></b>				
High	43	47	10	489
Low	70	27	4	3,255

Source: NICS 2009/10

1. Results exclude don't knows and refusals.
2. HRP: Household Reference Person (in order of sequence, the person who owns or rents the accommodation, highest earner or oldest person).
3. See Figure B1 in Tabular Annex. When combined, PSNI policing districts A and B equate to Belfast City Council area.
4. Rank order of super output areas (derived from 2010 Northern Ireland Multiple Deprivation Measure).
5. ASB: Anti-social behaviour (measure derived from responses to the seven individual strands in Table A4).

## TECHNICAL ANNEX

### Sampling and fieldwork

The initial NICS 2009/10 sample consisted of 6,852 addresses, randomly selected from the Land and Property Services domestic property database. Visits to each address by an interviewer from the NISRA Central Survey Unit resulted in an eligible sample of 5,990 occupied addresses, from which attempts were made to interview one randomly selected adult respondent at each address.

Selecting only one person at each address means that individuals living in large households have a lower chance of being included in the sample than those living in small households. Accordingly, the data presented in this publication have been weighted by household size to prevent a bias towards small household sizes.

In January 2005, the NICS began operating on a continuous basis. This bulletin refers primarily to fieldwork undertaken during the financial year 1 April 2009 to 31 March 2010, which involved complete interviews with 4,102 people aged 16 years and over. This represents an eligible response rate of 68%.

Respondents were assured in advance of the interviews that any information they provided would be treated as entirely confidential and that the level of detail produced in publications or in any subsequent analyses would not allow for identification of individuals. The interviews typically lasted just under an hour for non-victims, although those involving respondents who disclosed several crimes could last much longer.

### Rounding, error and statistical significance

Don't knows, refusals and non-valid responses have been excluded from the analyses. Percentages may not always sum to 100 due to the effect of rounding to the nearest whole number, or because respondents could give more than one response.

Due to a combination of both sampling and non-sampling error, any sample is unlikely to reflect precisely the characteristics of the population.

Because NICS estimates are subject to sampling error, differences between estimates from successive years of the survey or between population subgroups may occur by chance. Statistical significance tests are used to identify which differences are unlikely to have occurred by chance.

For the purposes of this bulletin, where differences have emerged as being statistically significant, these have been reported at the 5% ( $p < 0.05$ ) level of probability (two-tailed tests). This means that, for any observed result that is found to be statistically significant, one can be 95% confident that this has not happened by chance.

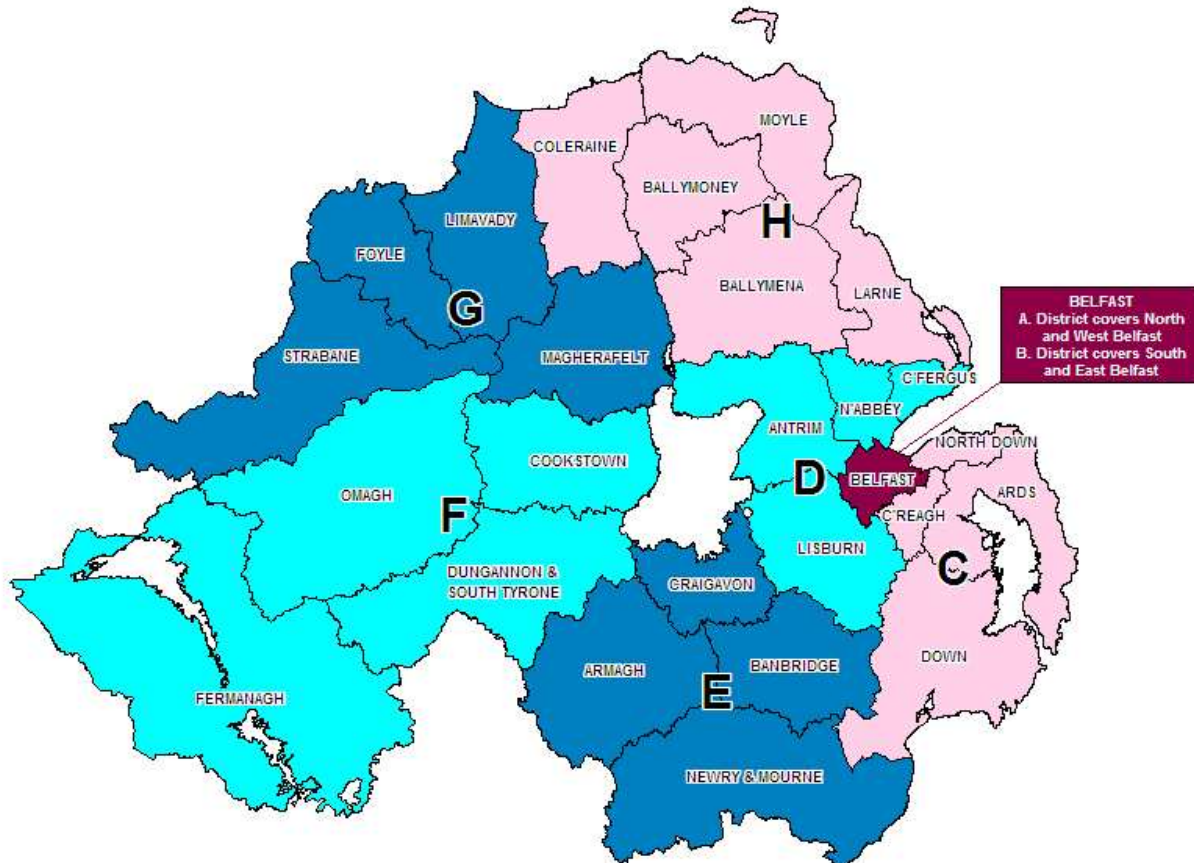
## NICS 2009/10: Perceptions of Crime

Table B1: Sample profile for NICS 2009/10

Group	Sub-group	Unweighted number	Unweighted %	Weighted %
<b>Sex</b>	Men	1,810	44	46
	Women	2,282	56	54
<b>Age group</b>	16-24	372	9	13
	25-34	659	16	15
	35-44	741	18	18
	45-54	699	17	18
	55-64	650	16	16
	65-74	552	13	12
	75+	419	10	8
<b>Religion</b>	Catholic	1,650	40	42
	Protestant	2,139	52	51
<b>Area type</b>	Urban	2,391	58	56
	Urban, excluding Belfast	1,748	43	41
	Rural	1,711	42	44
<b>Policing district<sup>1</sup></b>	A&B (Belfast)	643	16	14
	C	716	17	17
	D	635	15	15
	E	637	16	16
	F	452	11	12
	G	525	13	13
	H	494	12	13
	<b>Multiple Deprivation Measure Rank<sup>2</sup></b>	1st quintile (most deprived)	762	19
2nd quintile	841	21	20	
3rd quintile	810	20	21	
4th quintile	814	20	21	
5th quintile (least deprived)	774	19	20	

1. See Figure B1. When combined, PSNI policing districts A and B equate to Belfast City Council area.
2. Rank order of super output areas (derived from 2010 Multiple Deprivation Measure).

Figure B1: Map of PSNI Policing Districts



1. Based on Ordnance Survey of Northern Ireland data © 2007.

**NOTES**

**Department of Justice**

Justice Policy Directorate

Statistics and Research Branch

Massey House

Stormont Estate

Belfast

BT4 3SX

Email: [statistics.research@dojni.x.gsi.gov.uk](mailto:statistics.research@dojni.x.gsi.gov.uk)

Telephone: 028 9052 7157

Facsimile: 028 9052 7532

[www.dojni.gov.uk](http://www.dojni.gov.uk)